



GUILDFORD
B O R O U G H

James Whiteman
Managing Director

www.guildford.gov.uk

Dear Councillor

PLANNING COMMITTEE – WEDNESDAY 17TH JUNE 2020

Planning Committee Presentations (Pages 1 - 120)

Yours sincerely

Sophie Butcher Democratic Services Officer

Encs

This page is intentionally left blank

19/P/01734

**Tormead School
Cranley Road
Guildford
GU1 2JD**

[Previous](#)

[Next](#)

[Home](#)

19/P/01734 - Tormead School, Cranley Road, Guildford



© Crown Copyright 2020, Guildford Borough Council
Licence No. 100019625.

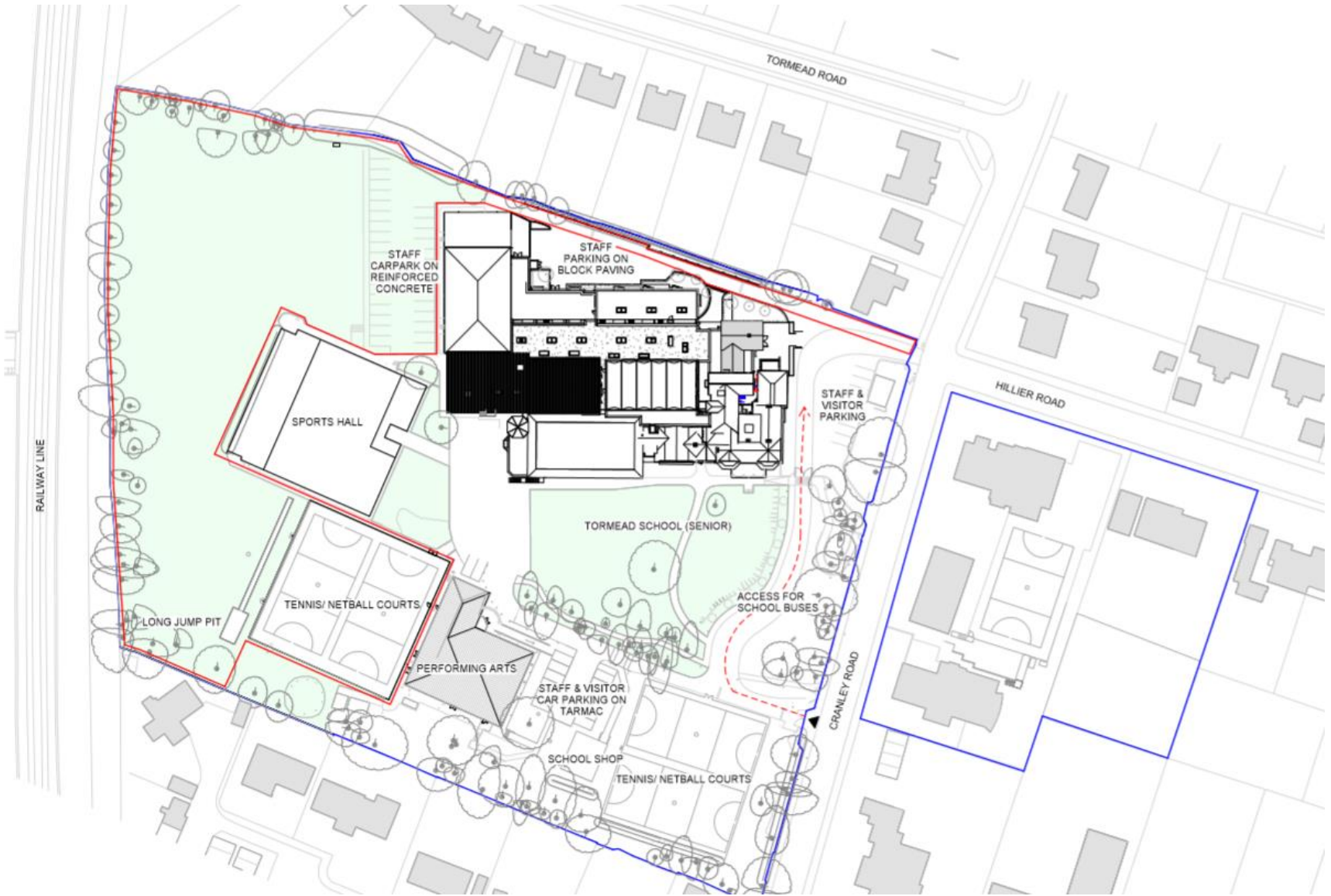
This map is for identification purposes only and should
not be relied upon for accuracy.

Print Date: 01/06/2020



Not to Scale





Existing site plan

[Previous](#)

[Next](#)

[Home](#)



Senior school existing



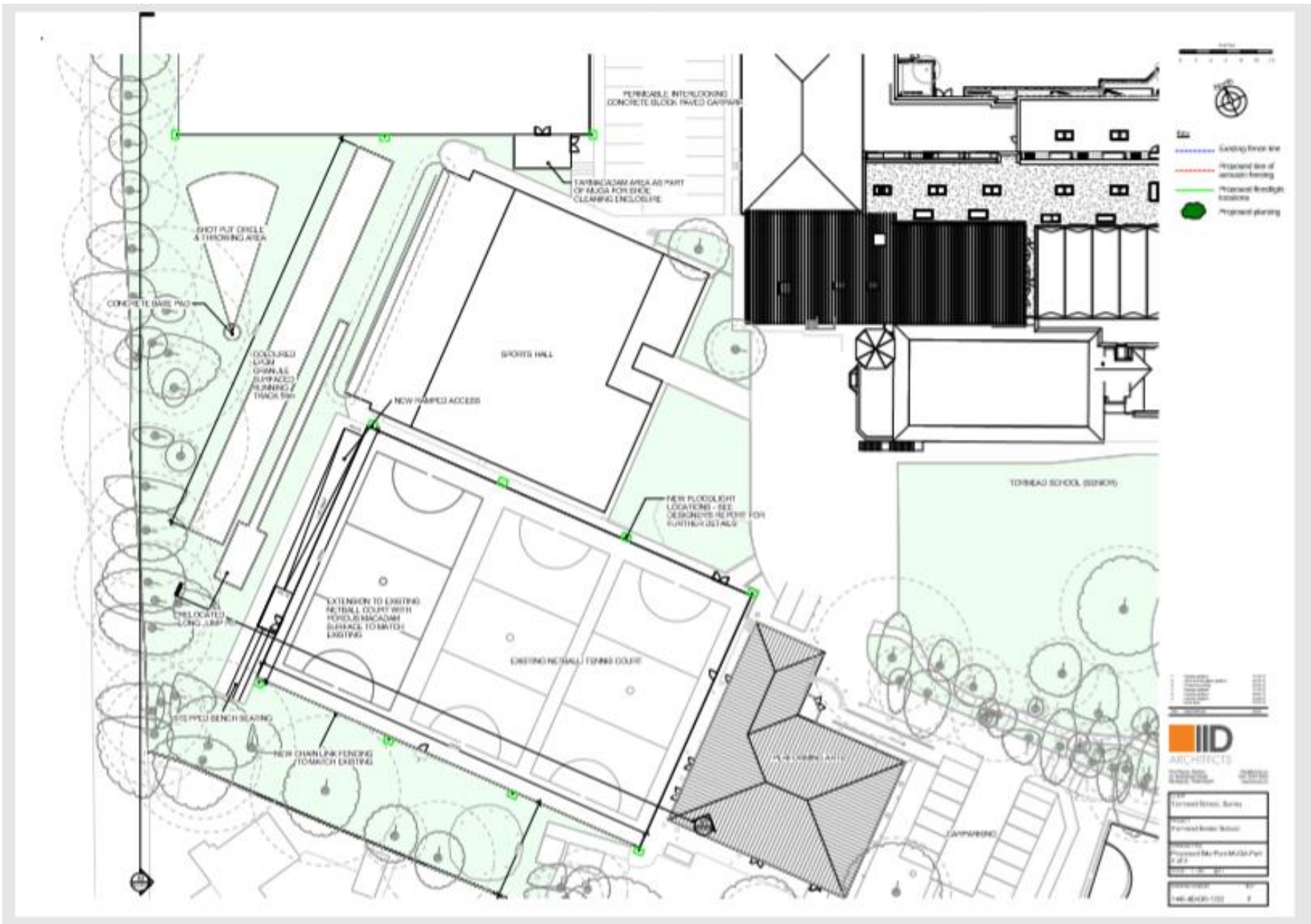
Senior school proposed



[Previous](#)

[Next](#)

[Home](#)



Proposed site plan MUGA Part 2 of 2

[Previous](#)

[Next](#)

[Home](#)



appinga PLC.

[Previous](#)

[Next](#)

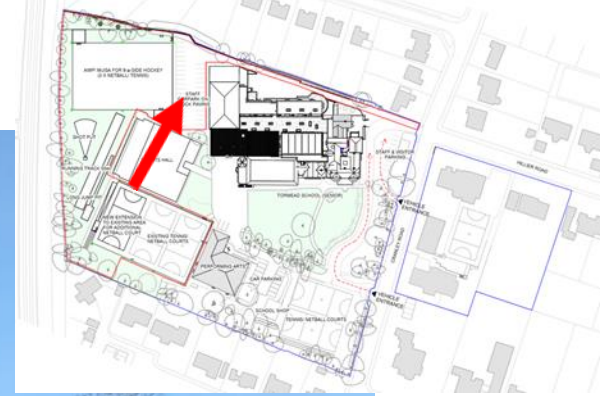
[Home](#)



[Previous](#)

[Next](#)

[Home](#)



[Previous](#)

[Next](#)

[Home](#)



[Previous](#)

[Next](#)

[Home](#)



[Previous](#)

[Next](#)

[Home](#)



[Previous](#)

[Next](#)

[Home](#)



[Previous](#)

[Next](#)

[Home](#)



[Previous](#)

[Next](#)

[Home](#)



[Previous](#)

[Next](#)

[Home](#)



[Previous](#)

[Next](#)

[Home](#)



[Previous](#)

[Next](#)

[Home](#)



[Previous](#)

[Next](#)

[Home](#)



[Previous](#)

[Next](#)

[Home](#)



This page is intentionally left blank

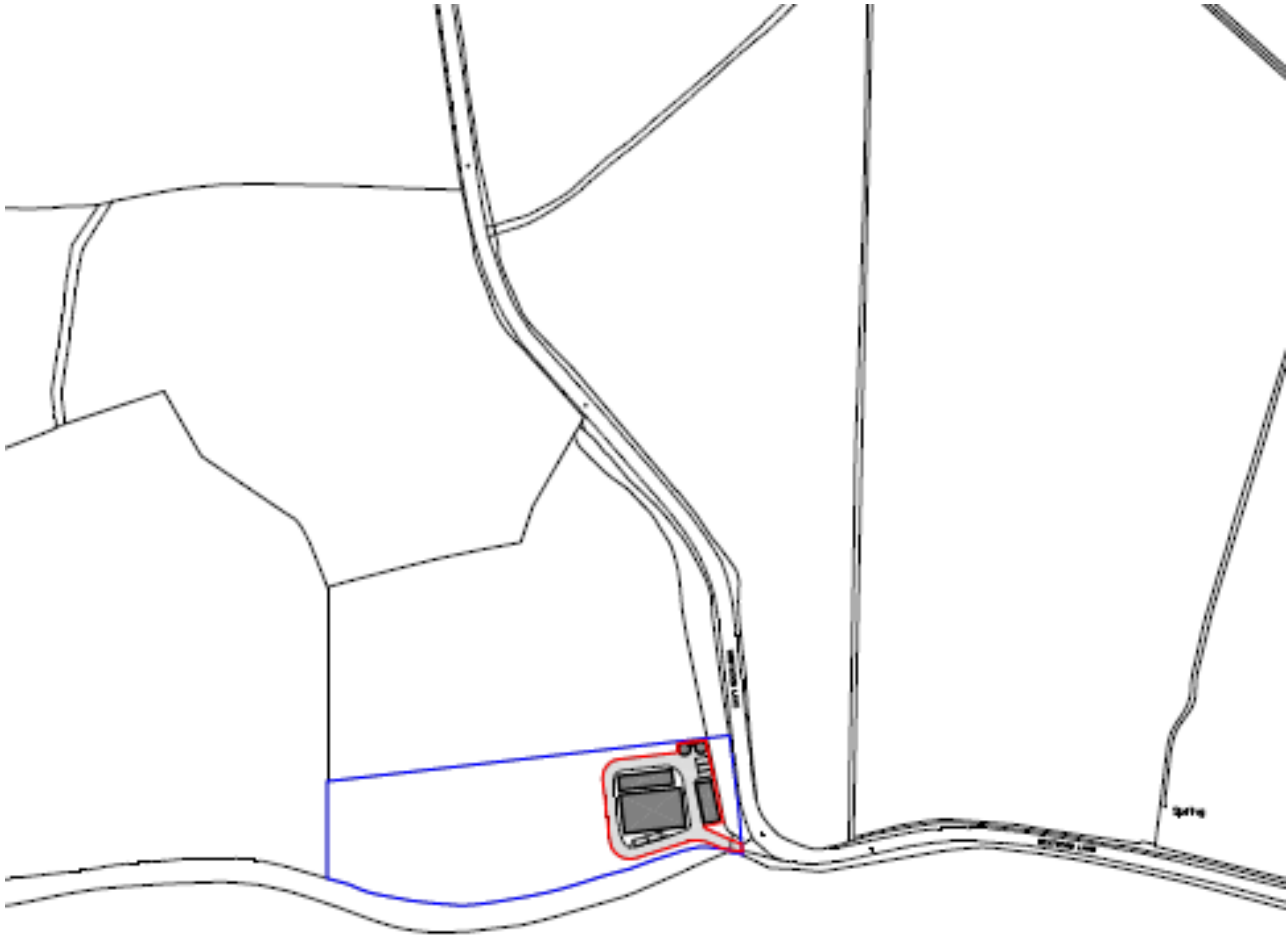
19/P/01980

**Land off Westwood Lane
Wanborough
Guildford**

[Previous](#)

[Next](#)

[Home](#)

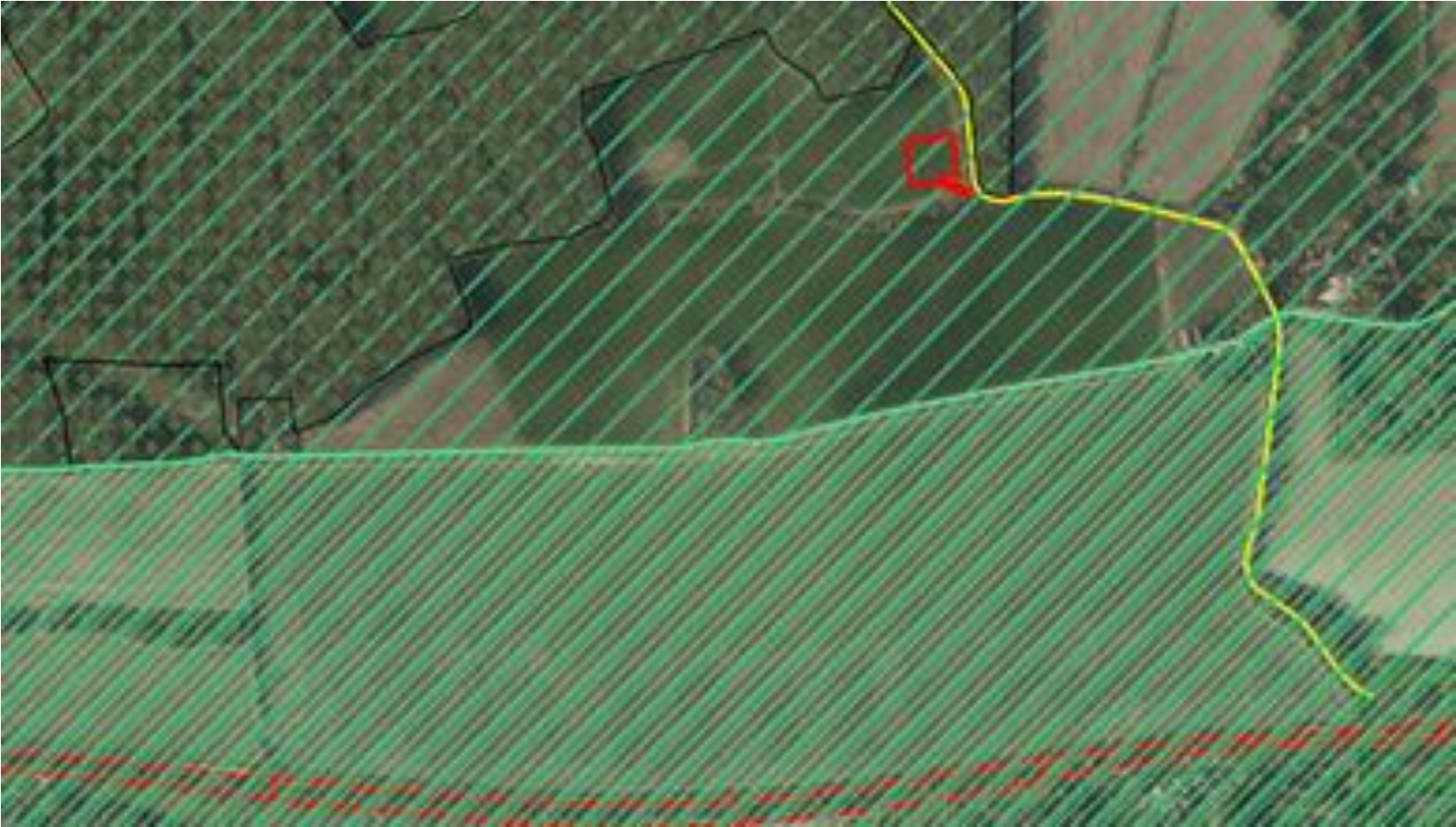


Site Location Plan

[Previous](#)

[Next](#)

[Home](#)

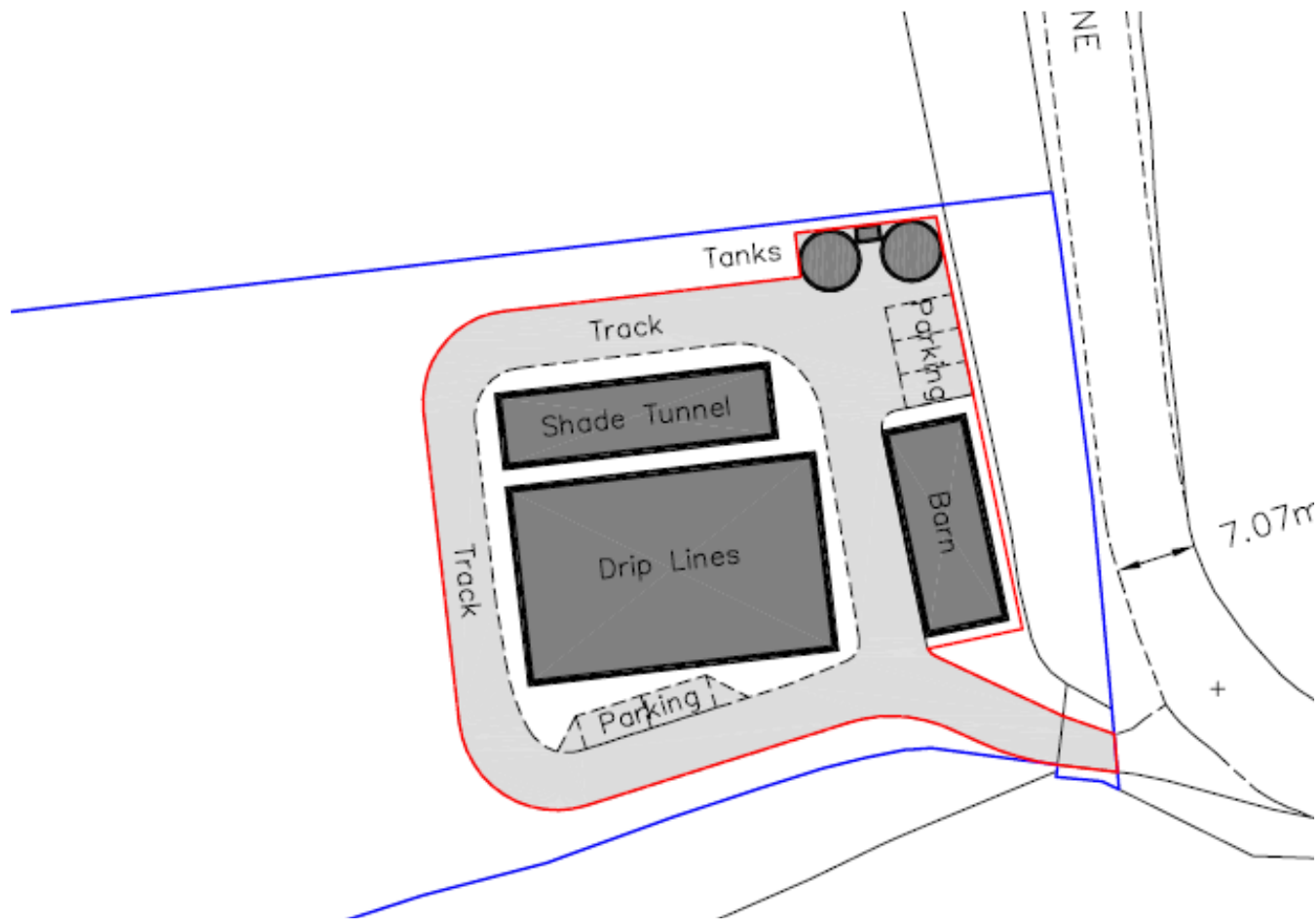


Ariel View

Previous

Next

Home

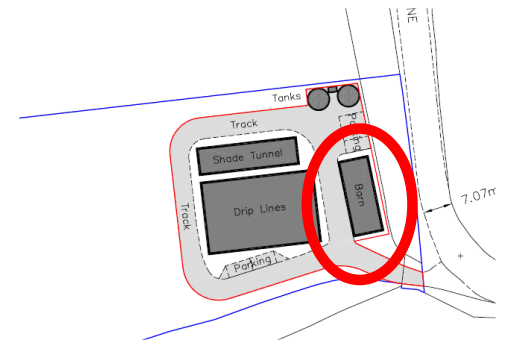
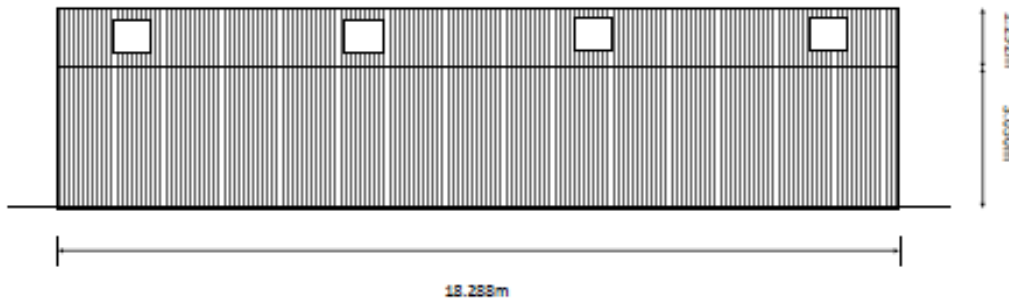
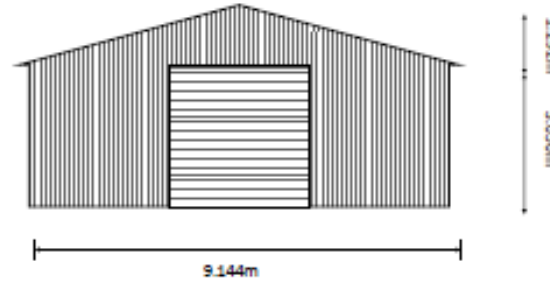
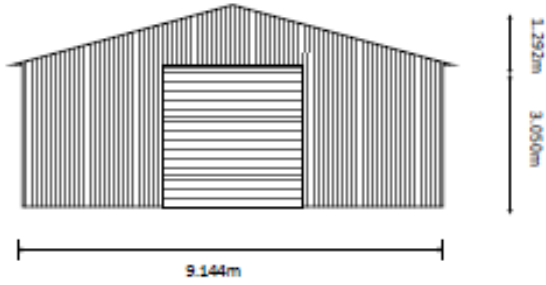


Block Plan

[Previous](#)

[Next](#)

[Home](#)

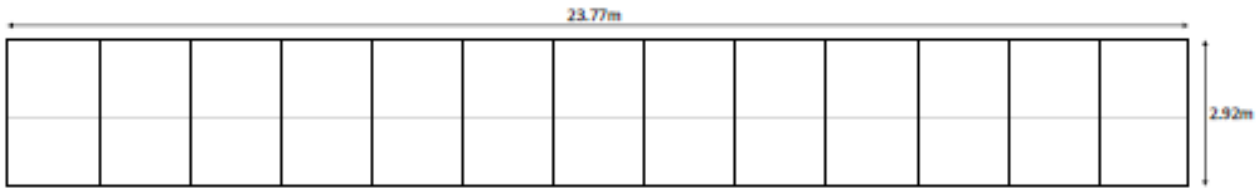


Nursery Barn

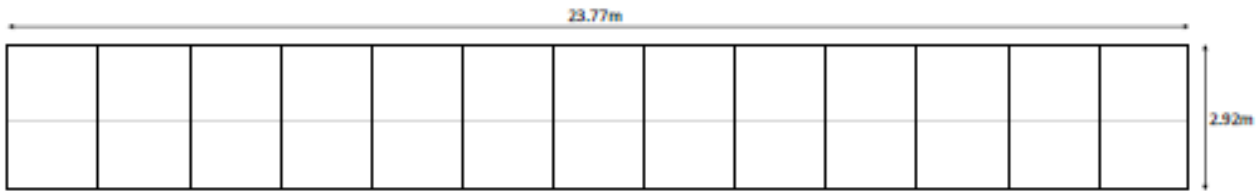
[Previous](#)

[Next](#)

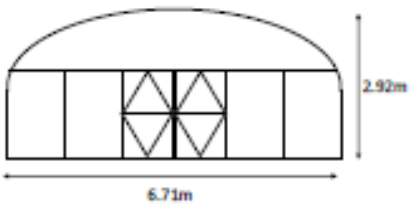
[Home](#)



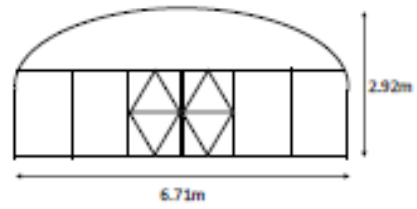
Side Elevation



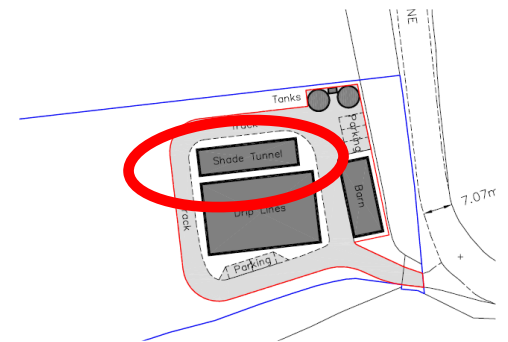
Side Elevation



End Elevation



End Elevation

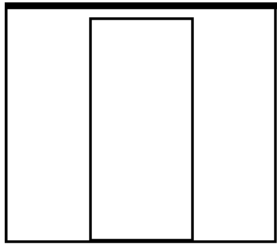


Shade Tunnel

[Previous](#)

[Next](#)

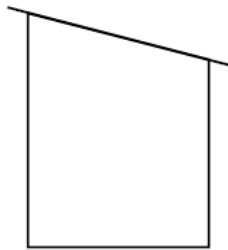
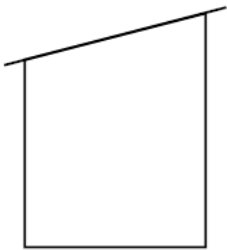
[Home](#)



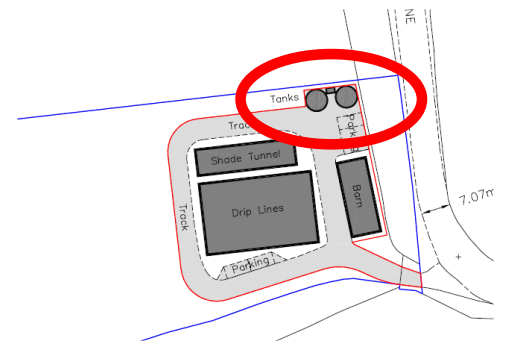
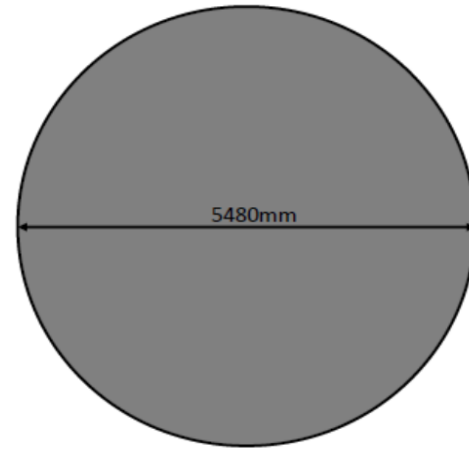
Front Elevation



Rear Elevation



Side Elevations

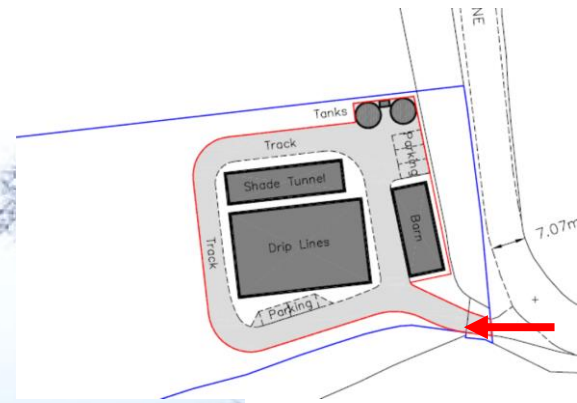


Pump Shed and water tank plans

[Previous](#)

[Next](#)

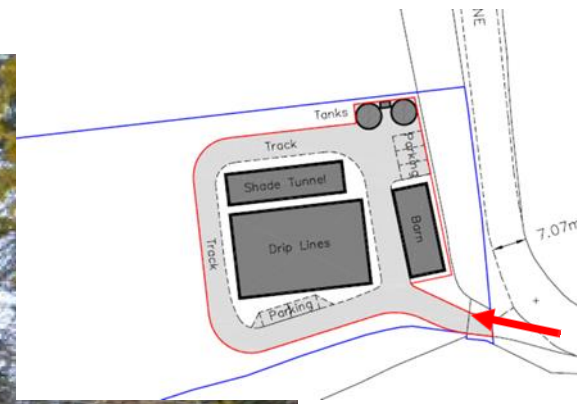
[Home](#)



[Previous](#)

[Next](#)

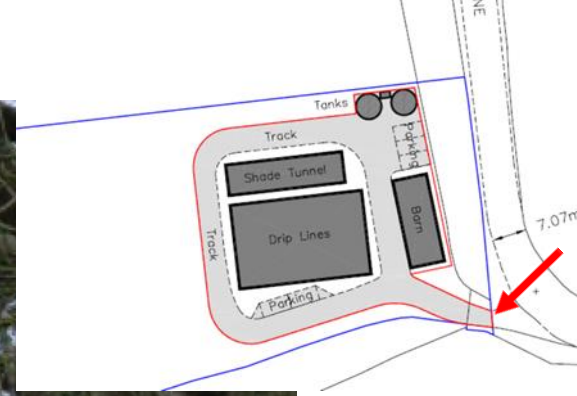
[Home](#)



[Previous](#)

[Next](#)

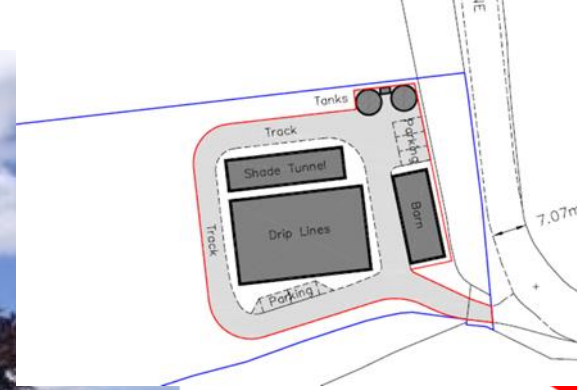
[Home](#)



[Previous](#)

[Next](#)

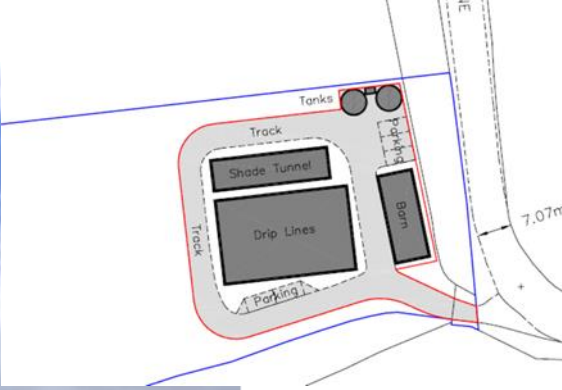
[Home](#)



[Previous](#)

[Next](#)

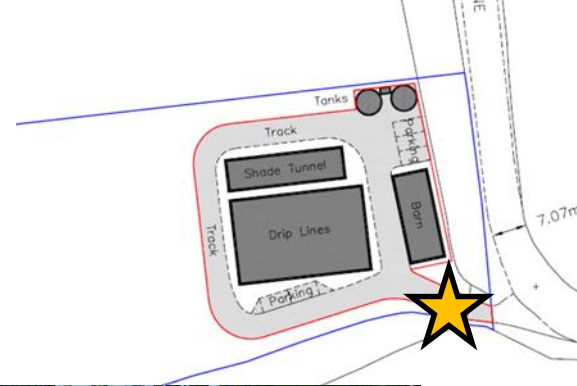
[Home](#)



[Previous](#)

[Next](#)

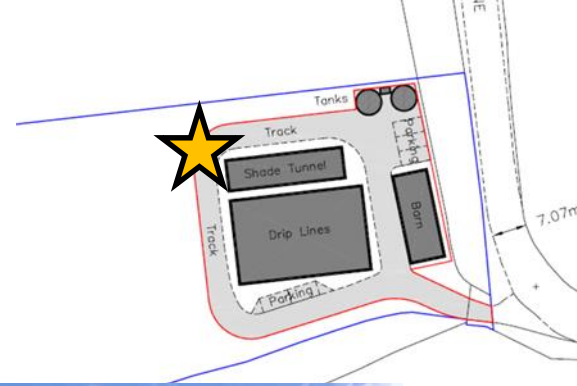
[Home](#)



[Previous](#)

[Next](#)

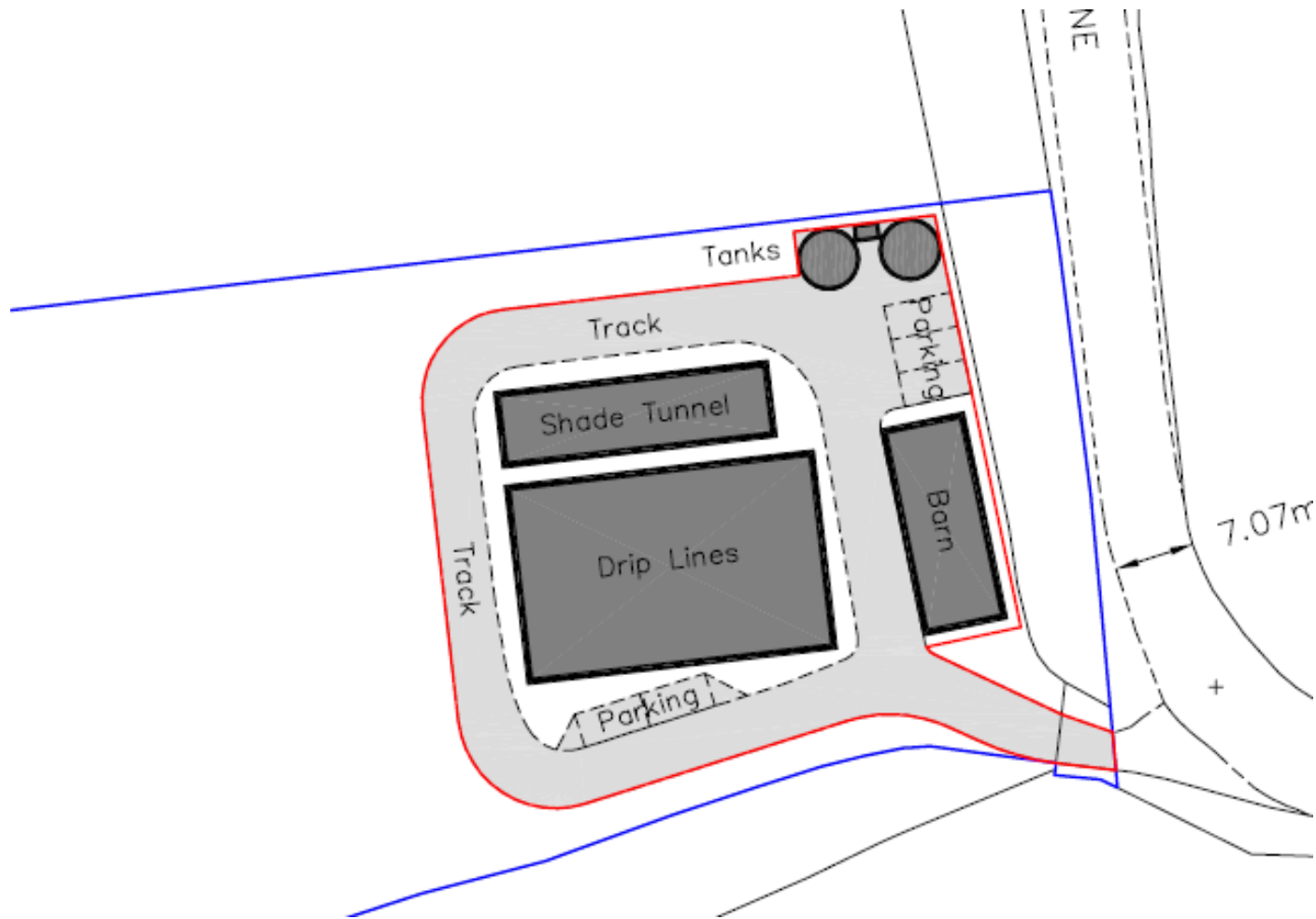
[Home](#)



[Previous](#)

[Next](#)

[Home](#)



Block Plan

[Previous](#)

[Next](#)

[Home](#)

End

[Previous](#)

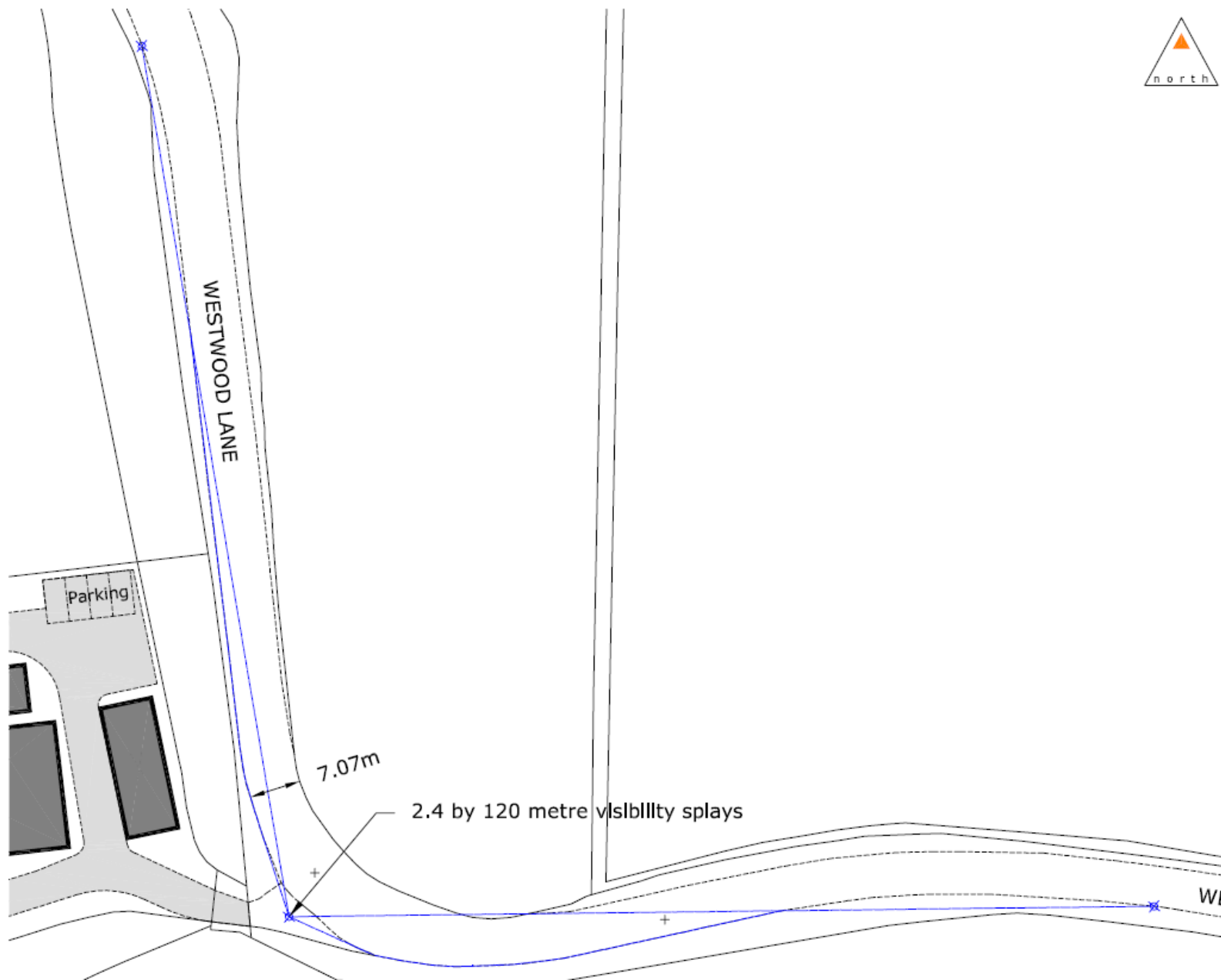
[Next](#)

[Home](#)

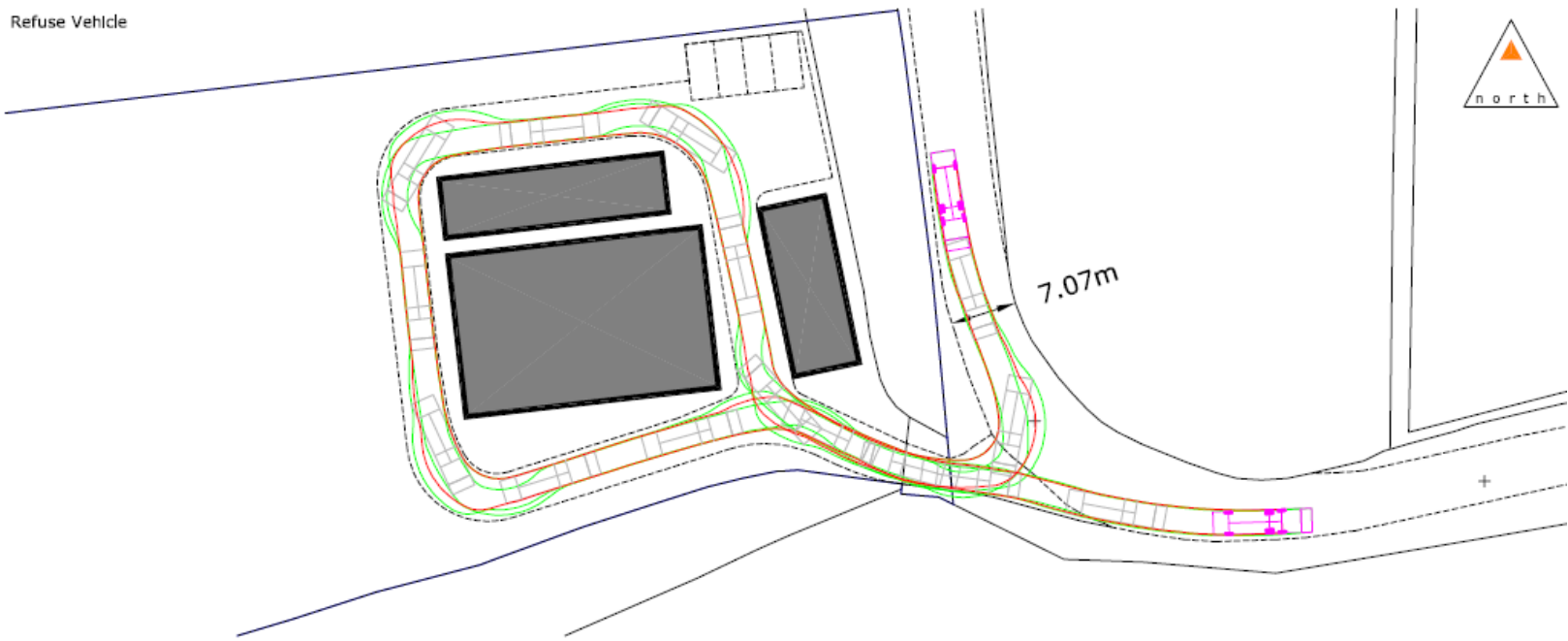
[Previous](#)

[Next](#)

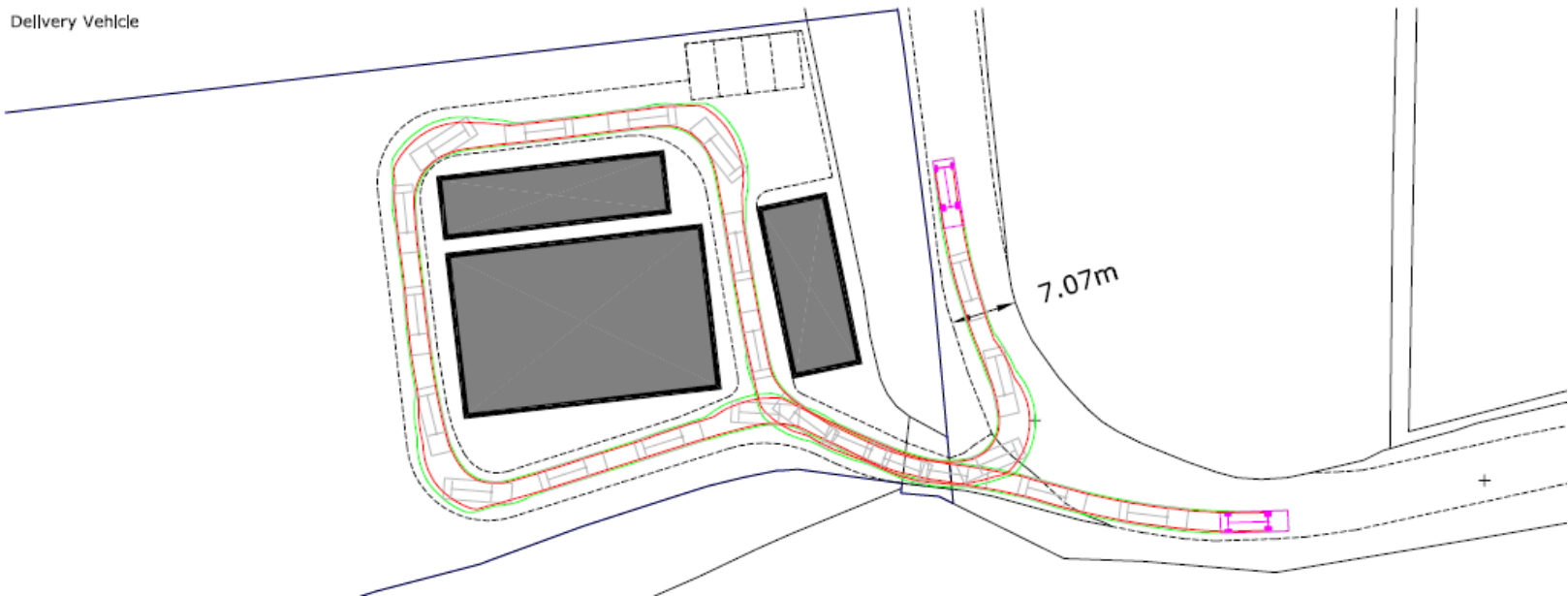
[Home](#)



Refuse Vehicle



Delivery Vehicle



Tracking plan within site

[Previous](#)

[Next](#)

[Home](#)

This page is intentionally left blank

19/P/02102

Land at Manor Farm

The Street

Tongham

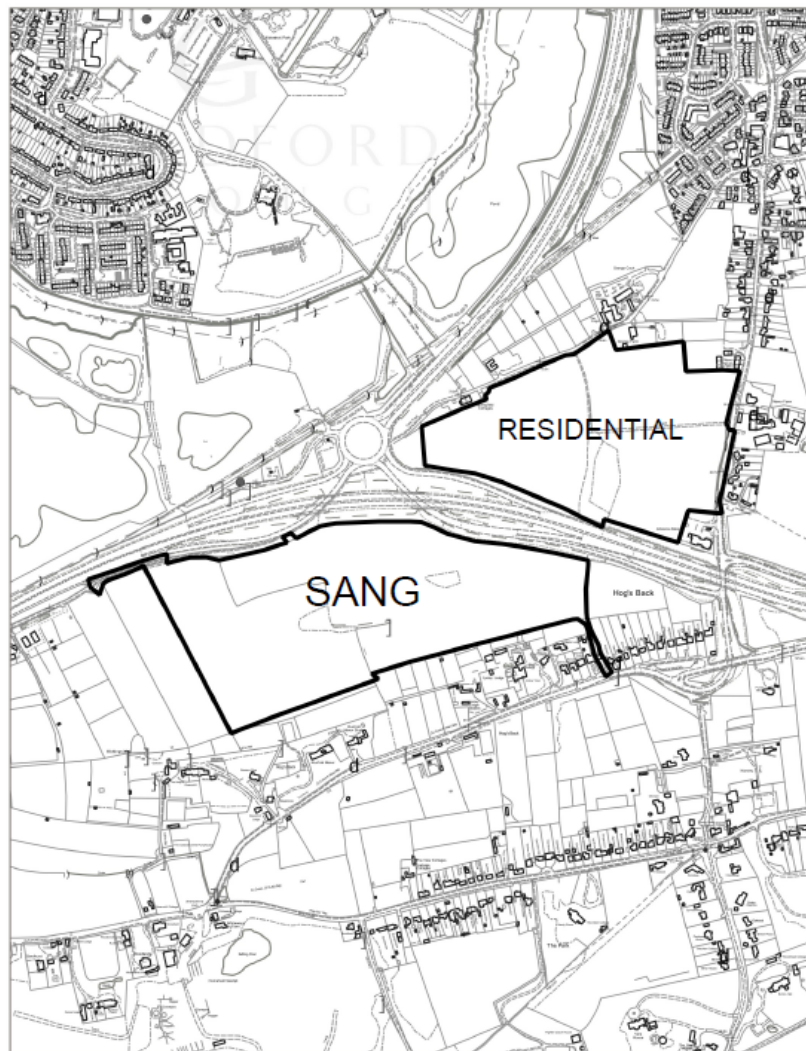
GU10 1DG

[Previous](#)

[Next](#)

[Home](#)

19/P/02102 - Land At Manor Farm, The Street, Tongham



© Crown Copyright 2020. Guildford Borough Council.
Licence No. 100019625.

This map is for identification purposes only and should
not be relied upon for accuracy.

Print Date: 11/03/2020



Not to Scale





Site layout plan

[Previous](#)

[Next](#)

[Home](#)



Building scale plan

Previous

Next

Home

Dwelling mix plan



Tenure plan



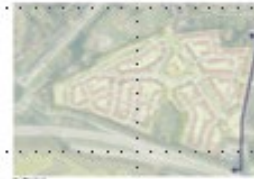
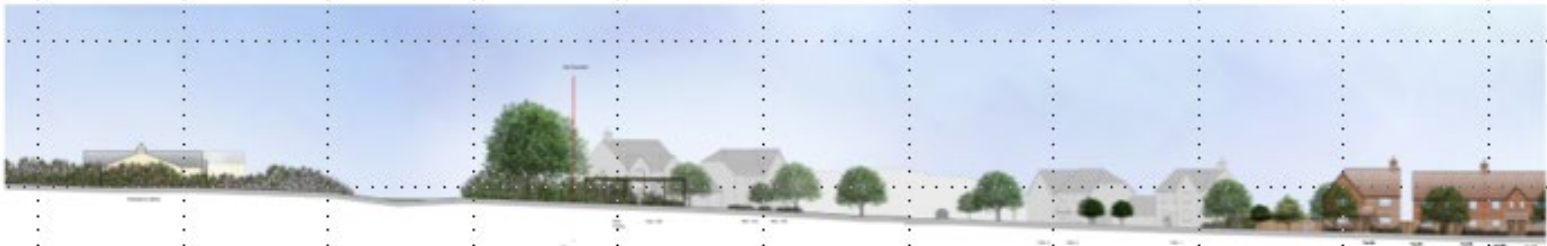


Refuse

Previous

Next

Home

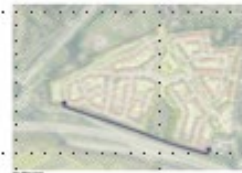
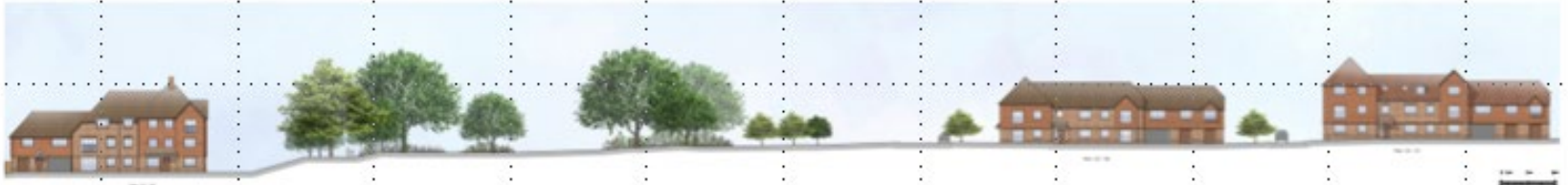
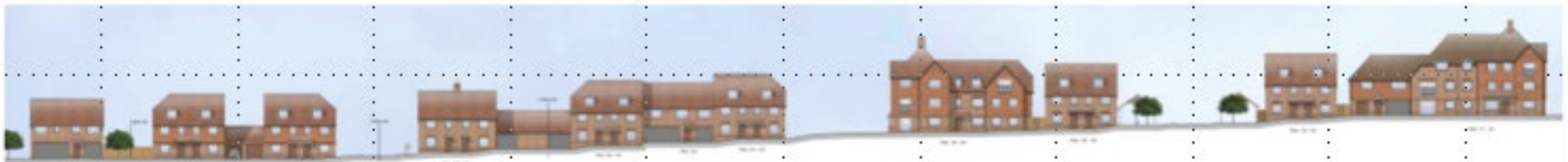



Coloured Street Scene- AA
Minor Farm, Tongham
19204 / C102A
3 May 2020 @ AC February 2020

[Previous](#)

[Next](#)

[Home](#)

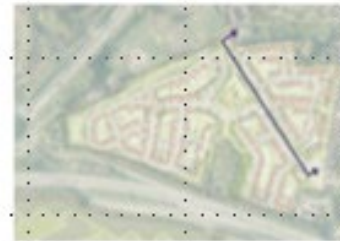
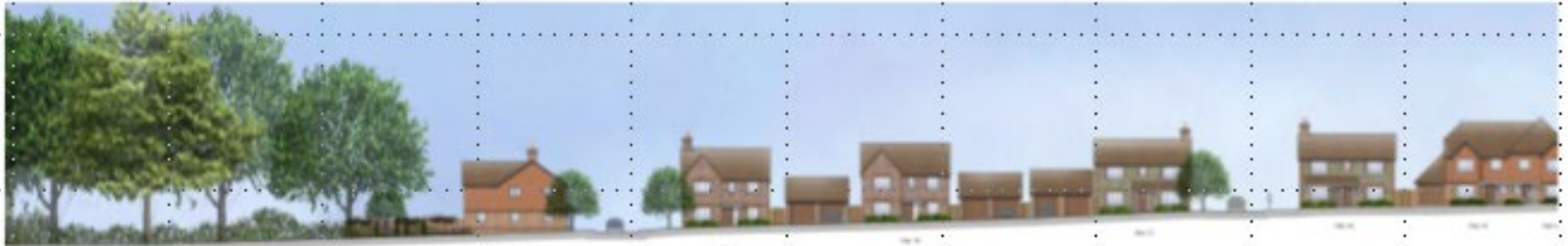


Coloured Street Scene- BB
Manor Farm, Tongham
19204 / C103A
Scale 1:500 © J.C. Matthews 2020

Previous

Next

Home



Coloured Street Scene-3D
Manor Farm, Tongham

19204 / C105A

Scale 1:500 & 1:500 @ A1, February 2020

[Previous](#)

[Next](#)

[Home](#)



Site entrance

[Previous](#)

[Next](#)

[Home](#)



Central Green

Previous

Next

Home



Coloured Sketch Perspective - Copse Frontage
Manor Farm, Tongham
19204 / C112A
NTS @ A2 February 2019

© All rights reserved in the design and information shown on this drawing. This drawing may be used for the site for the planning and other purposes only. It is not valid for any other purposes and should not be used as a basis for any other drawings or plans. The drawing is the property of the architect and shall remain the property of the architect. No part of this drawing may be reproduced or transmitted in any form or by any means, electronic, mechanical, photocopying, recording, or by any information storage and retrieval system, without the prior written permission of the architect.

© All rights reserved in the design and information shown on this drawing. This drawing may be used for the site for the planning and other purposes only. It is not valid for any other purposes and should not be used as a basis for any other drawings or plans. The drawing is the property of the architect and shall remain the property of the architect. No part of this drawing may be reproduced or transmitted in any form or by any means, electronic, mechanical, photocopying, recording, or by any information storage and retrieval system, without the prior written permission of the architect.

Copse Frontage

Previous

Next

Home



The Street

Previous

Next

Home



The Street

[Previous](#)

[Next](#)

[Home](#)



The Street as proposed

[Previous](#)

[Next](#)

[Home](#)



Proposed pedestrian access

[Previous](#)

[Next](#)

[Home](#)



Grange Road pedestrian access

[Previous](#)

[Next](#)

[Home](#)



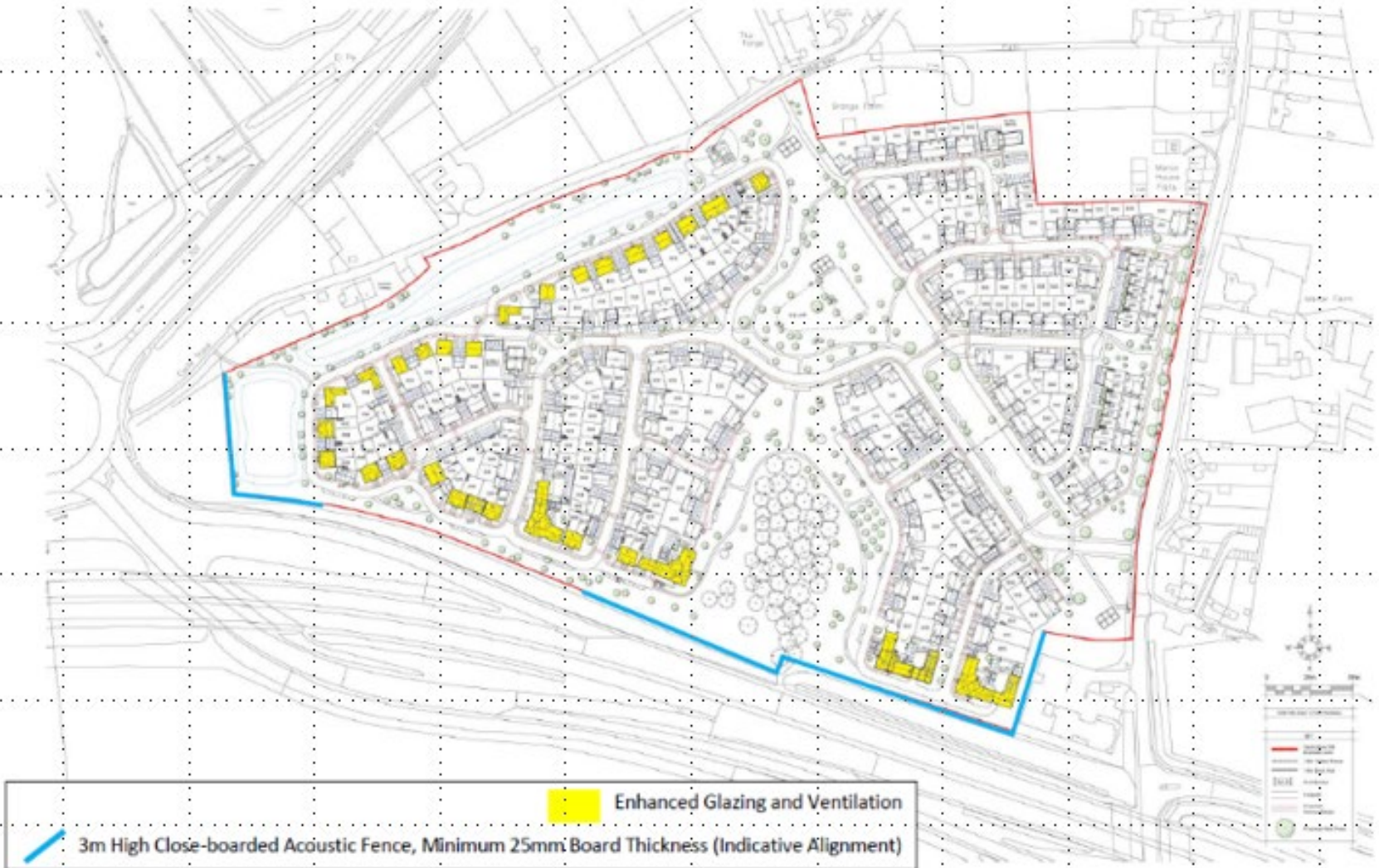
Looking toward the Hog's Back

[Previous](#)

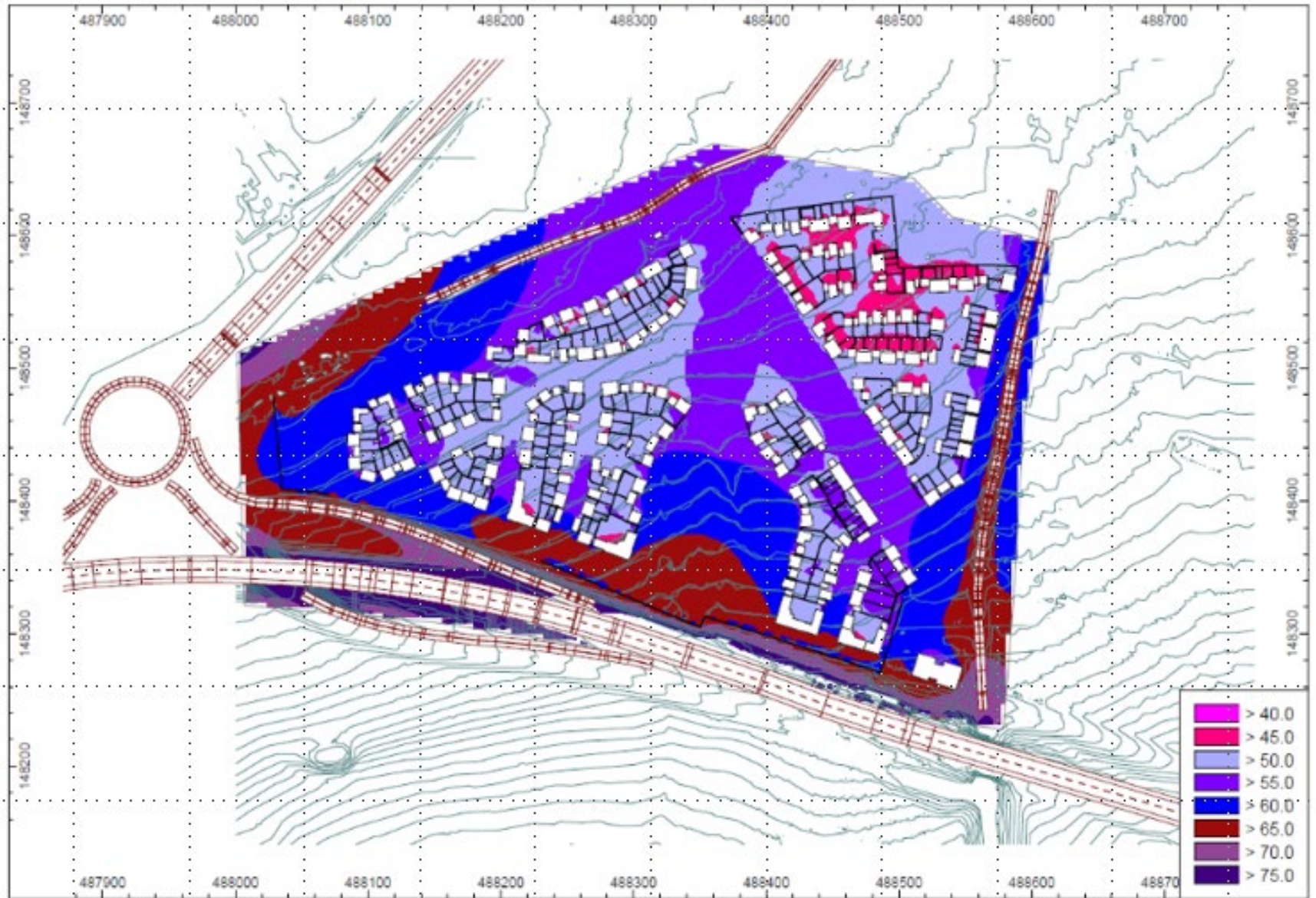
[Next](#)

[Home](#)

Manor Farm, Tongham – Noise Mitigation Plan



180630 - Manor Farm, Tongham - CadnaA Noise Model - 1.5m Receiver Heights - dBLA_{eq,T}





Aerial perspective view

[Previous](#)

[Next](#)

[Home](#)



Site layout plan

[Previous](#)

[Next](#)

[Home](#)

This page is intentionally left blank

20/P/00478

**North Moors Allotment Site, North
Moors, Guildford**

[Previous](#)

[Next](#)

[Home](#)



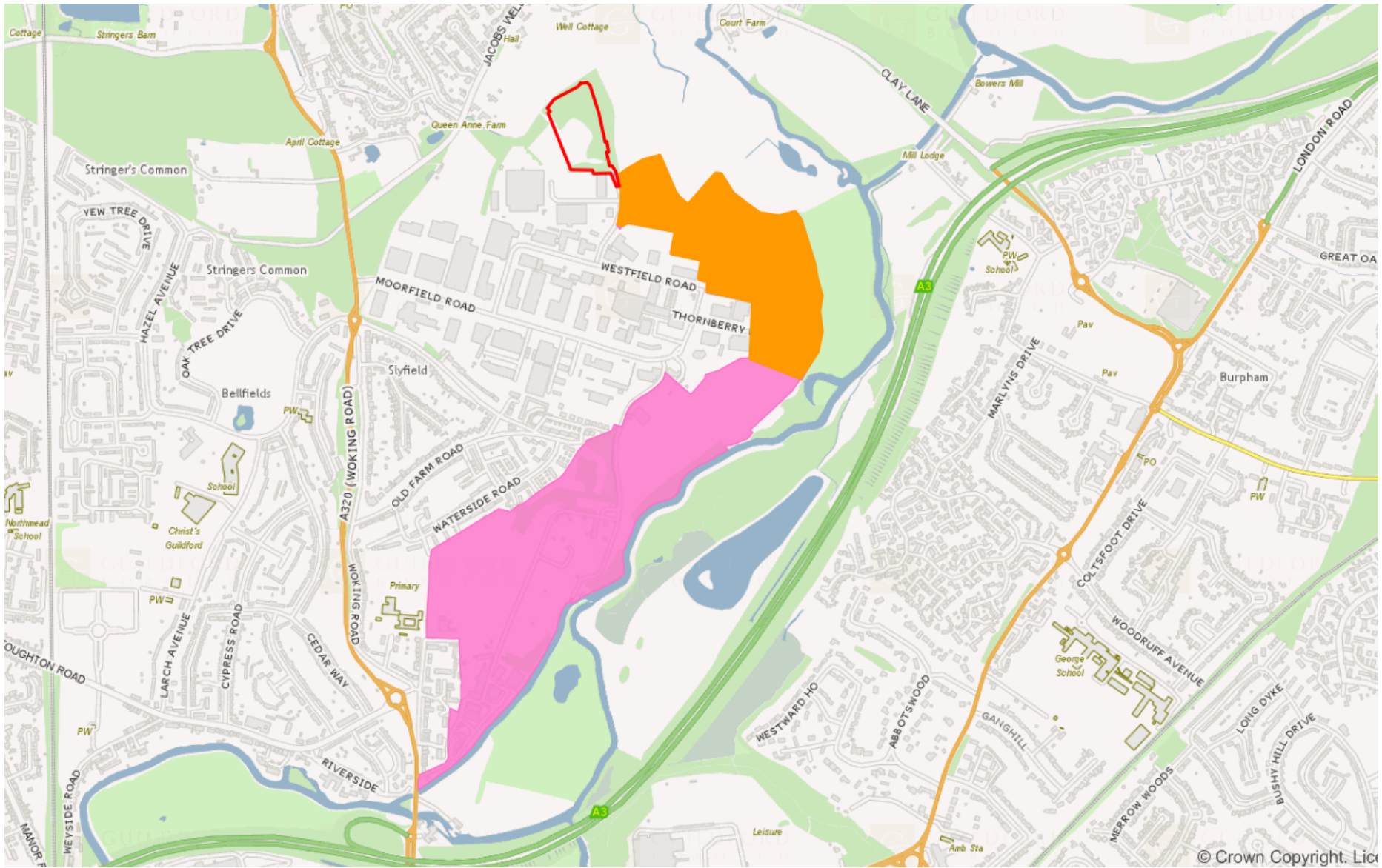
© Crown Copyright. Licence No. 100019625. 2016

Location Plan

Previous

Next

Home



© Crown Copyright. Lic

[Previous](#)

[Next](#)

[Home](#)



[Previous](#)

[Next](#)

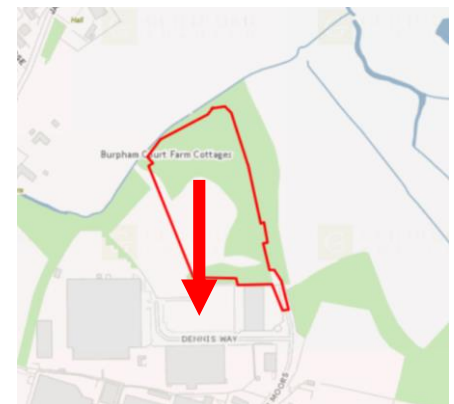
[Home](#)



[Previous](#)

[Next](#)

[Home](#)



[Previous](#)

[Next](#)

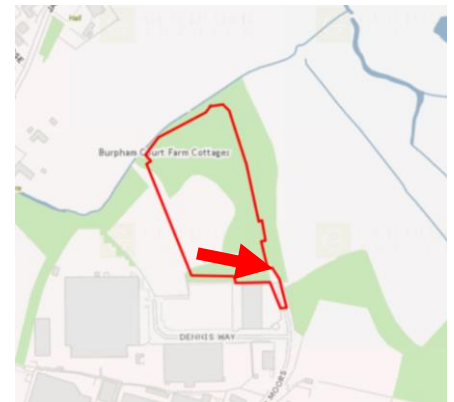
[Home](#)



[Previous](#)

[Next](#)

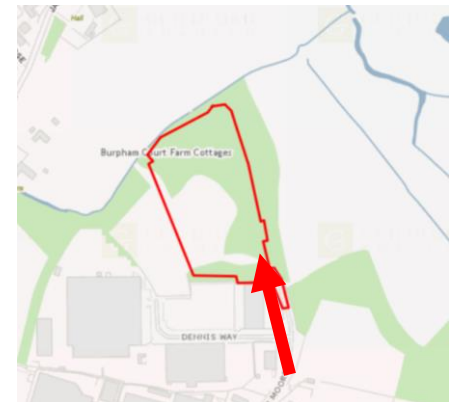
[Home](#)



[Previous](#)

[Next](#)

[Home](#)



[Previous](#)

[Next](#)

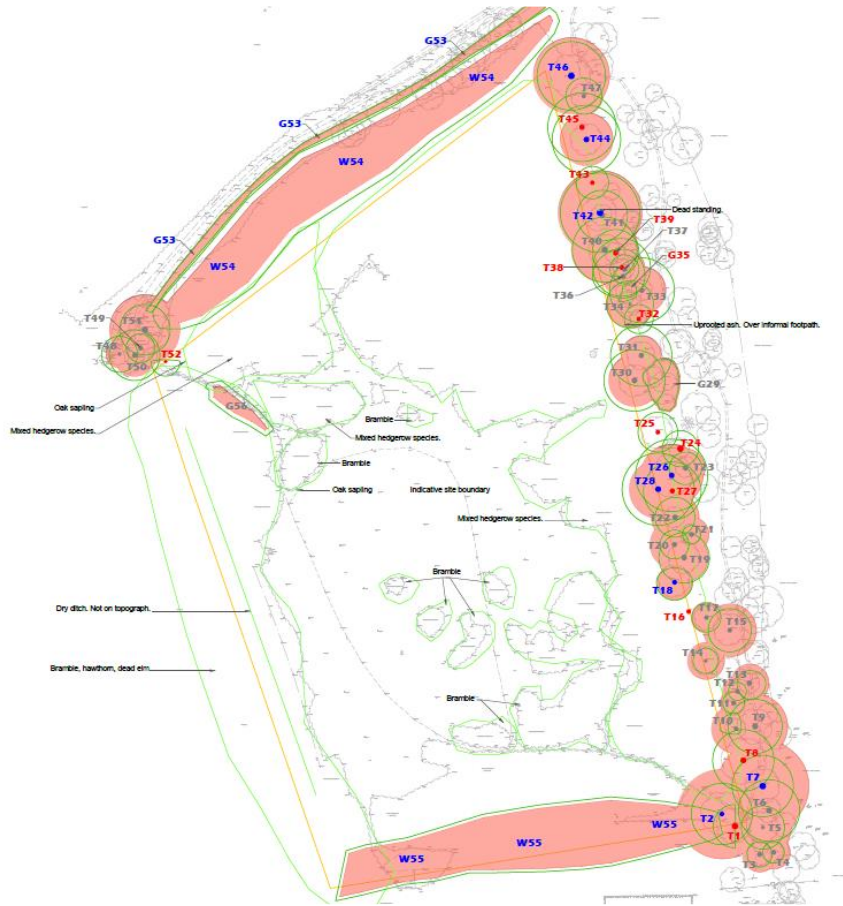
[Home](#)



[Previous](#)

[Next](#)

[Home](#)



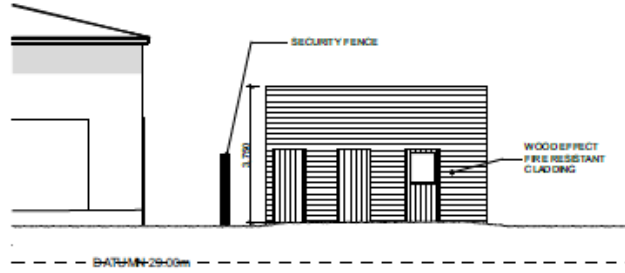


Proposed site layout plan

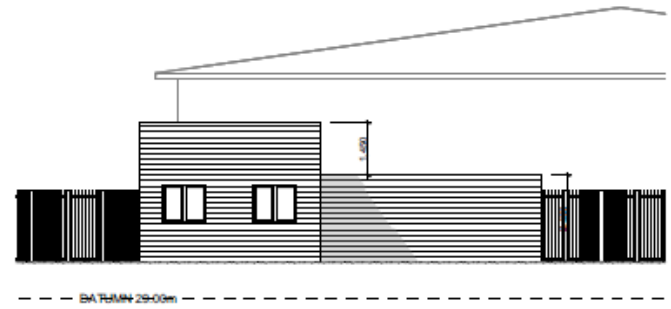
[Previous](#)

[Next](#)

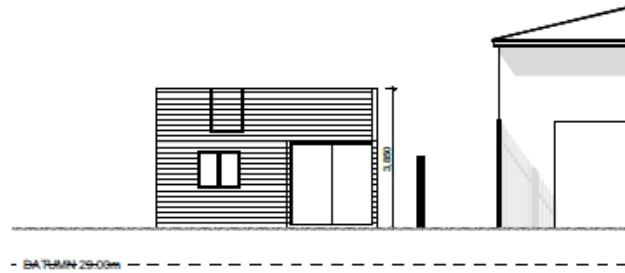
[Home](#)



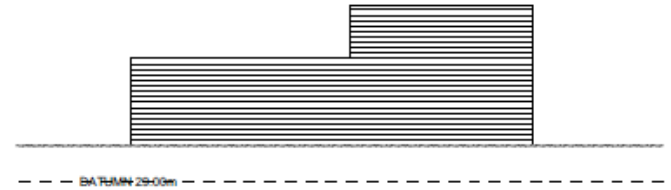
EAST ELEVATION 1:100



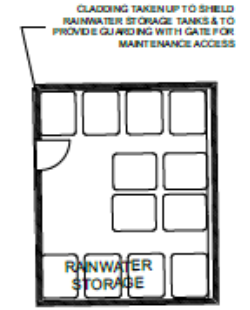
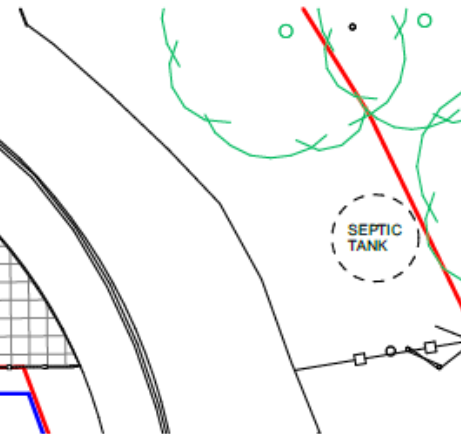
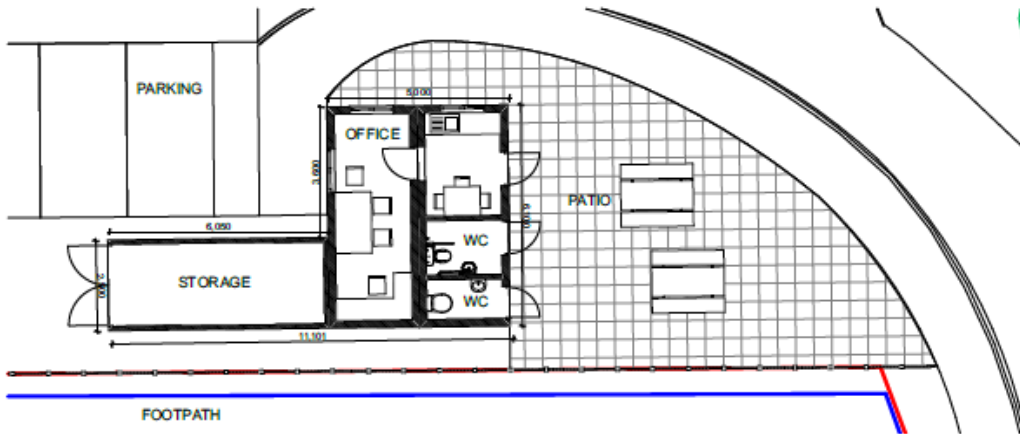
NORTH ELEVATION 1:100

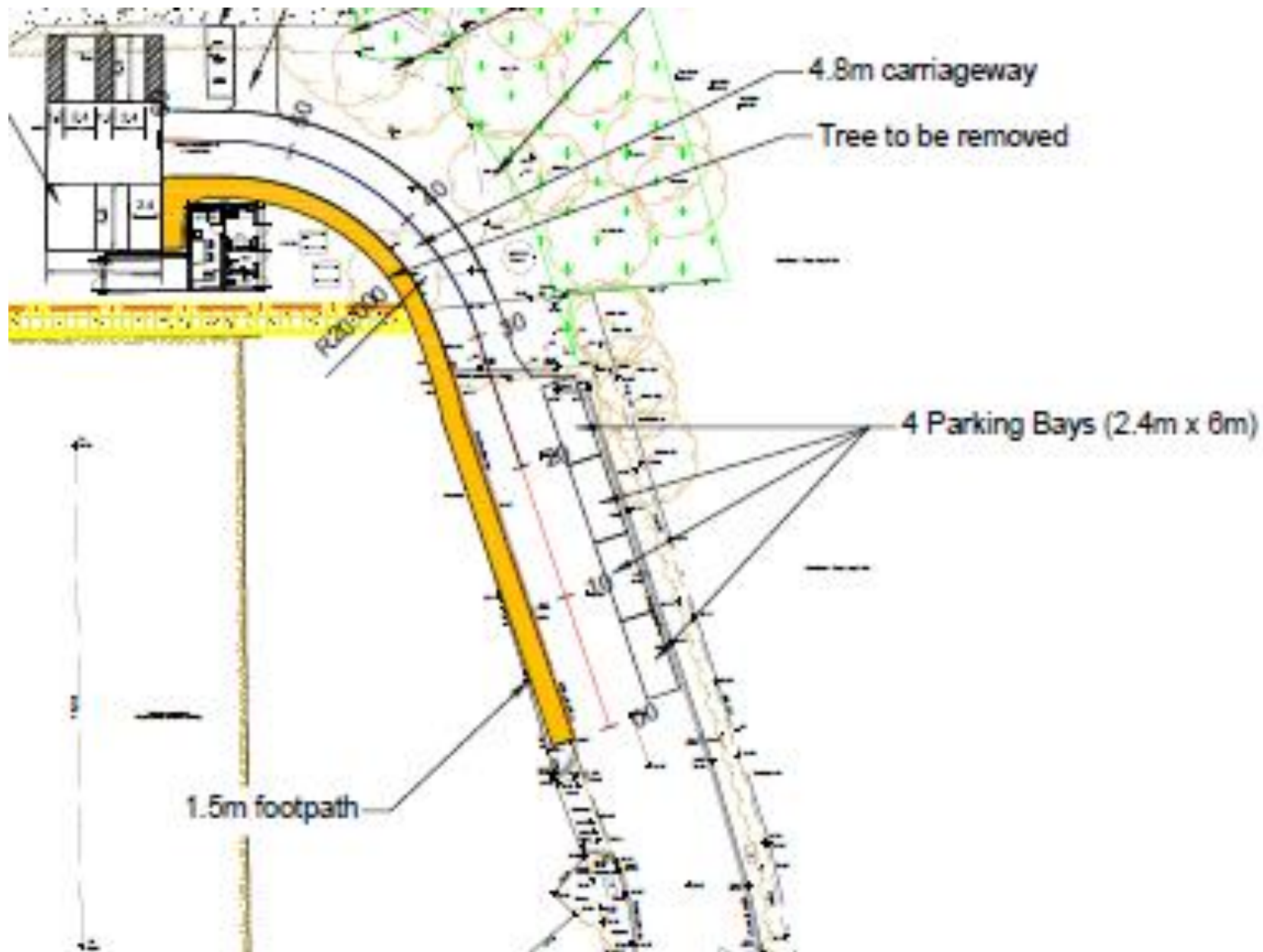


WEST ELEVATION 1:100



SOUTH ELEVATION 1:100





[Previous](#)

[Next](#)

[Home](#)



Proposed site layout plan

[Previous](#)

[Next](#)

[Home](#)

END

[Previous](#)

[Next](#)

[Home](#)

[Previous](#)

[Next](#)

[Home](#)

[Previous](#)

[Next](#)

[Home](#)

20/P/00409

**20 The Street
West Horsley
KT24 6AX**

[Previous](#)

[Next](#)

[Home](#)



Location plan

[Previous](#)

[Next](#)

[Home](#)



Local Plan allocation

[Previous](#)

[Next](#)

[Home](#)



Approved Application
(no. 19/P/01210)

Site layout

[Previous](#)

[Next](#)

[Home](#)



Application site in context of approved future development

[Previous](#)

[Next](#)

[Home](#)



Front Elevation

Plots 1-2



Side Entrance Elevation



Front Elevation

Plot 3



Side Elevation

[Previous](#)

[Next](#)

[Home](#)



Front Elevation

Plots 4-5



Side Elevation



Front Elevation

Apartments – Plots 6-8

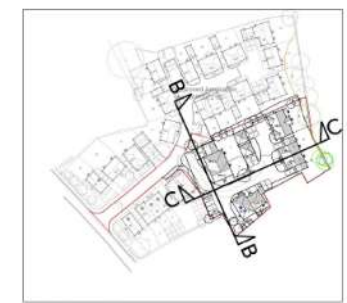


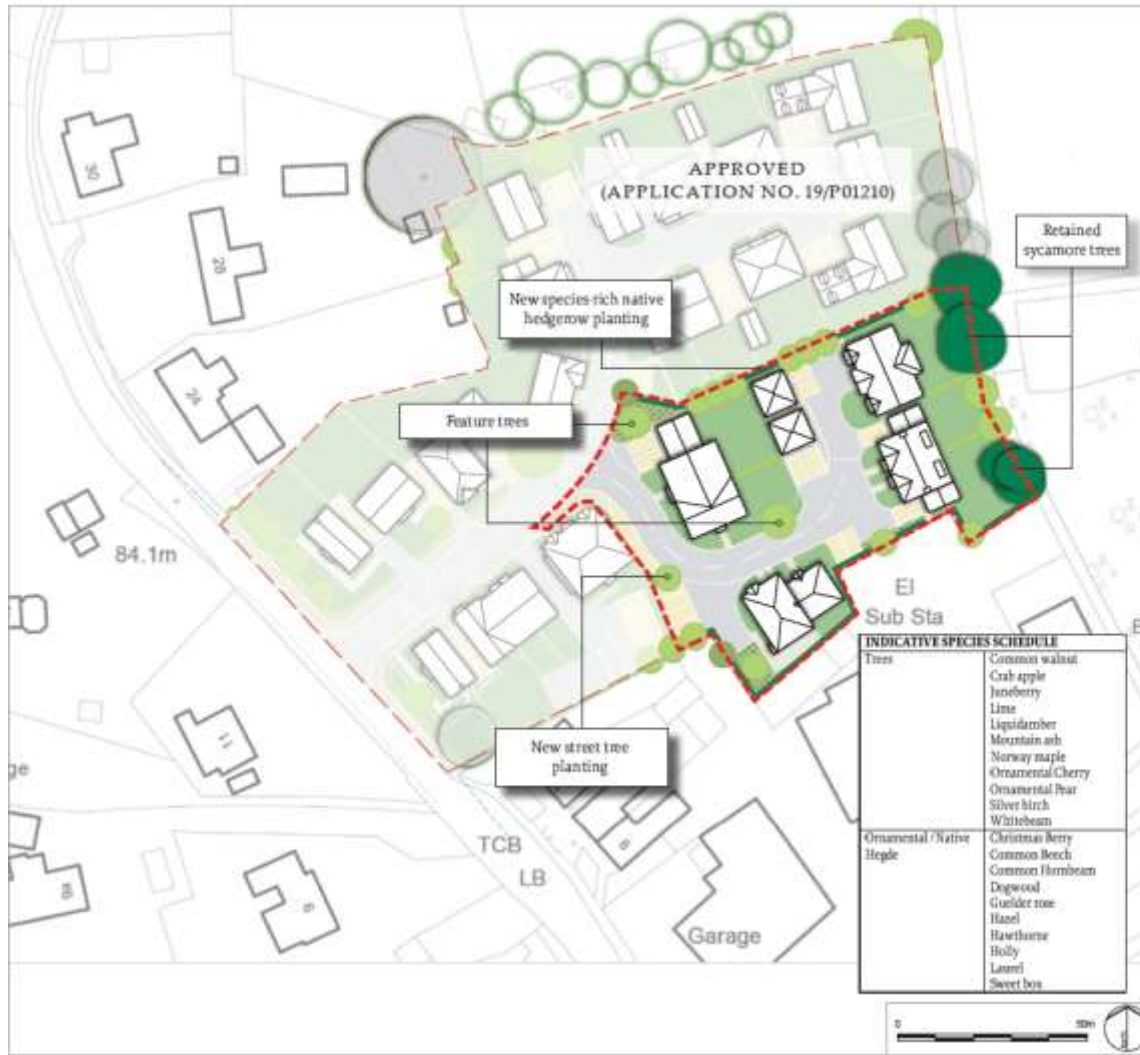
Side Elevation

[Previous](#)

[Next](#)

[Home](#)





LEGEND

- - - site boundary
- dwelling / garage
- parking bay
- street
- pavement
- hedge
- new tree planting
- retained tree
- retained woodland
- native species-rich hedgerow with trees
- wildflower turf
- native hedgerows
- fence

C	Client amendments	BC	02.08.20
B	Feature trees annotation	BC	26.02.20
A	Team comment amendments	BC	26.02.20
Rev	Amendments	App	Date

INDICATIVE SPECIES SCHEDULE

Trees	Common walnut Crab apple Juneberry Lime Liquidamber Mountain ash Norway maple Ornamental Cherry Ornamental Pear Silver birch Whitebeam
Ornamental / Native Hedger	Christian Berry Common Beech Common Hornbeam Dogwood Gelder rose Hazel Hawthorn Holly Lantern Sweet box

LDĀ DESIGN

PROJECT TITLE
LAND ADJACENT 20 THE STREET,
WEST HORSLEY

DRAWING TITLE
Landscape Strategy Plan

ISSUED BY: Oxford	T: 01605 587060
DATE: Feb 2020	DRAWN: JHR
SCALE: A3 1:1000	CHECKED: BC
STATUS: Final	APPROVED: BC

DWG. NO. 5272_005

No dimensions are to be scaled from this drawing.
All dimensions are to be checked on site.
Area measurements for indicative purposes only.

© LDA Design Consulting Ltd. Quality Assured to BS EN ISO 9001: 2008



[Previous](#)

[Next](#)

[Home](#)



[Previous](#)

[Next](#)

[Home](#)



[Previous](#)

[Next](#)

[Home](#)



Site layout

[Previous](#)

[Next](#)

[Home](#)

This page is intentionally left blank

20/P/00446

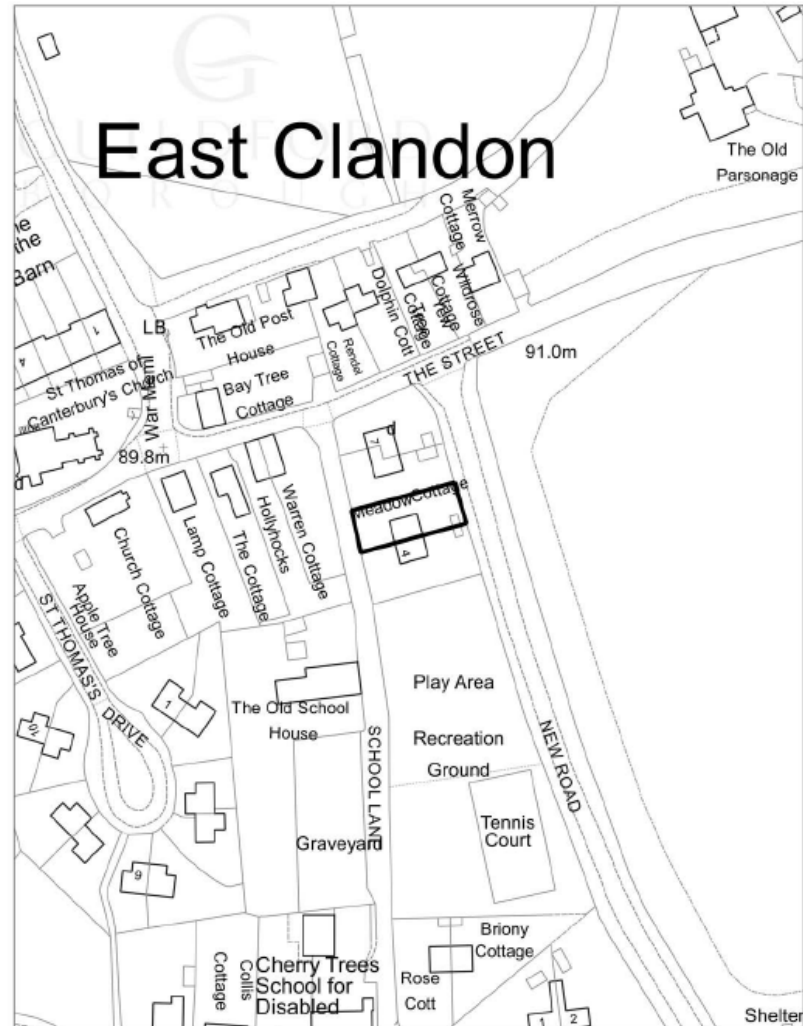
**Meadow Cottage
School Lane
East Clandon
GU4 7RS**

[Previous](#)

[Next](#)

[Home](#)

20/P/00446 - Meadow Cottage, School Lane, East Clandon,
Guildford




© Crown Copyright 2020, Guildford Borough Council.
Licence No. 100019625.

This map is for identification purposes only and should not be relied upon for accuracy.

Print Date: 01/05/2020

N
Not to Scale







Existing rear

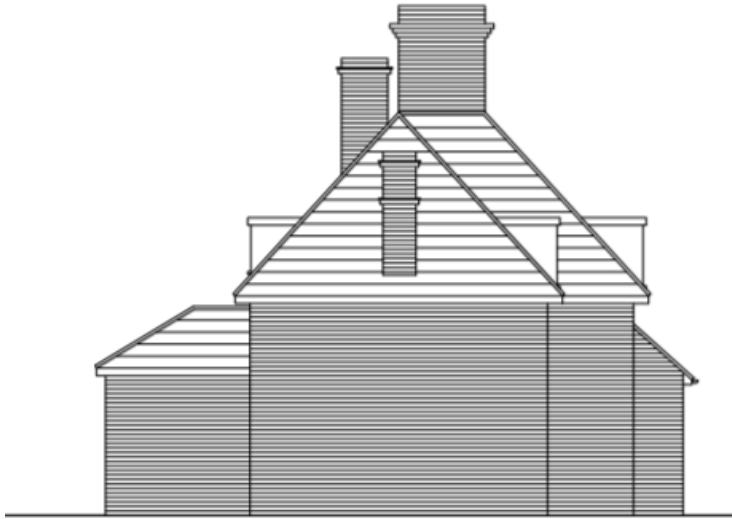


Proposed rear

[Previous](#)

[Next](#)

[Home](#)



Existing side

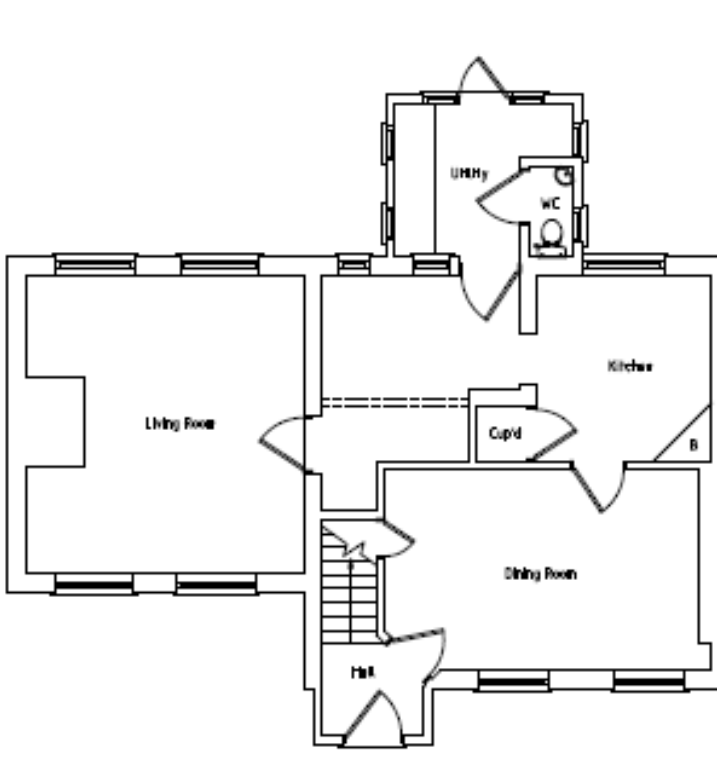
Proposed side



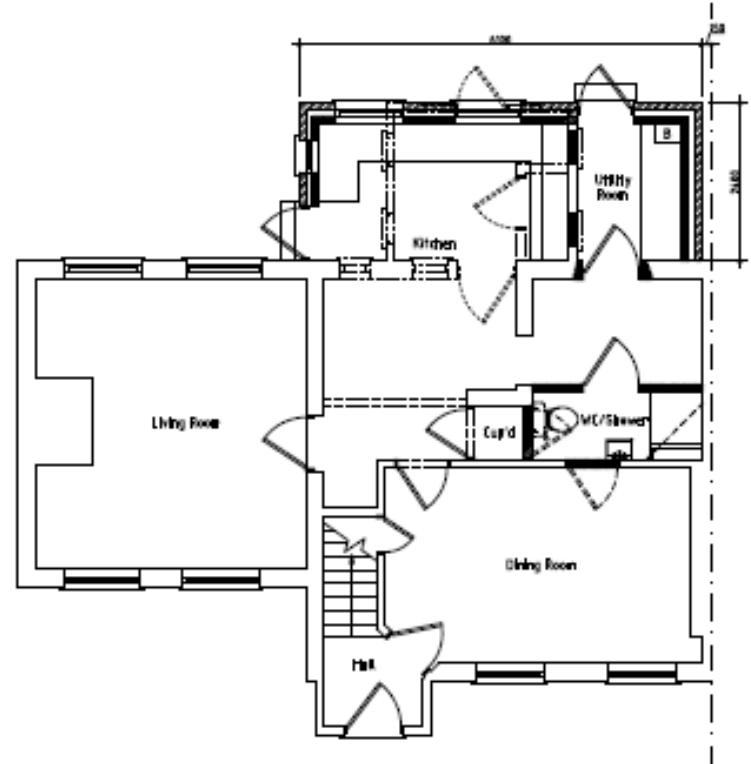
[Previous](#)

[Next](#)

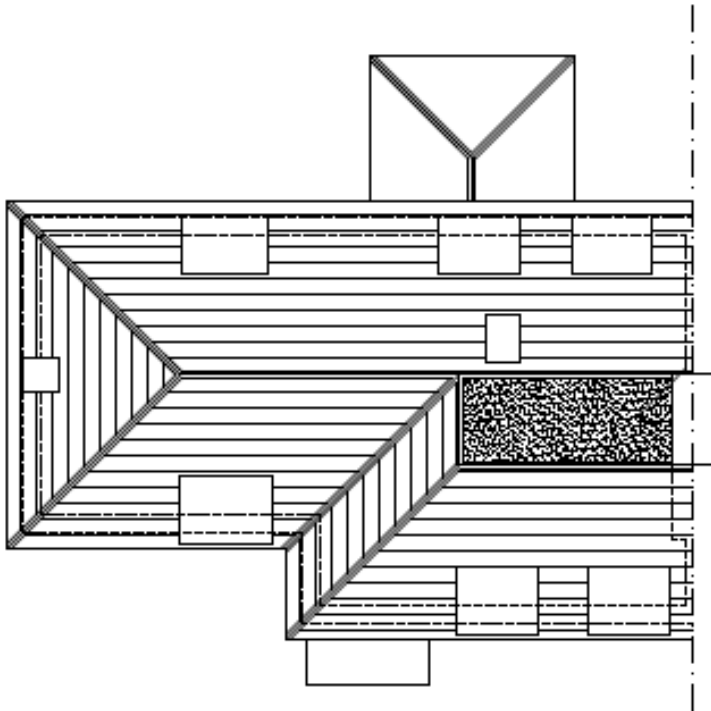
[Home](#)



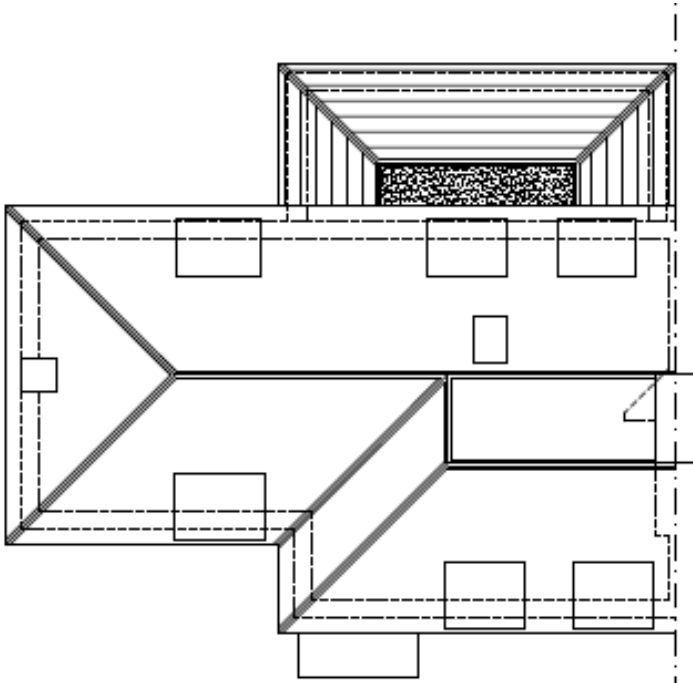
Existing ground floor plan



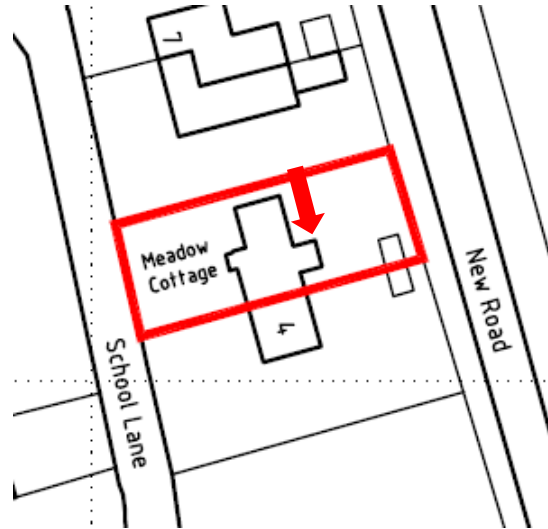
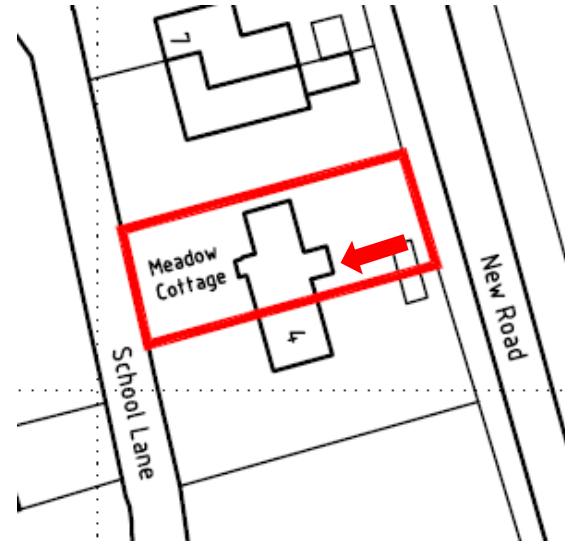
Proposed ground floor plan



Existing roof plan



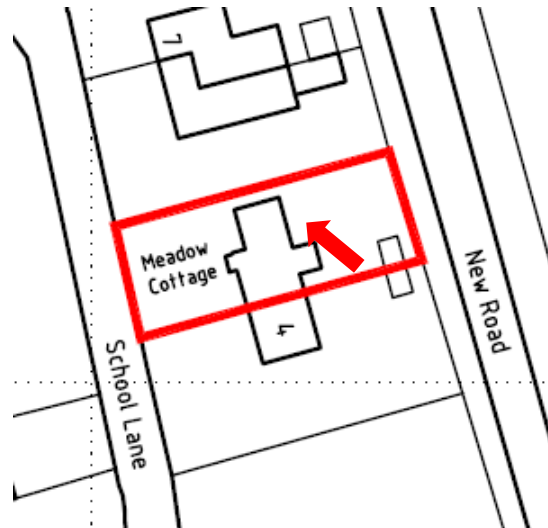
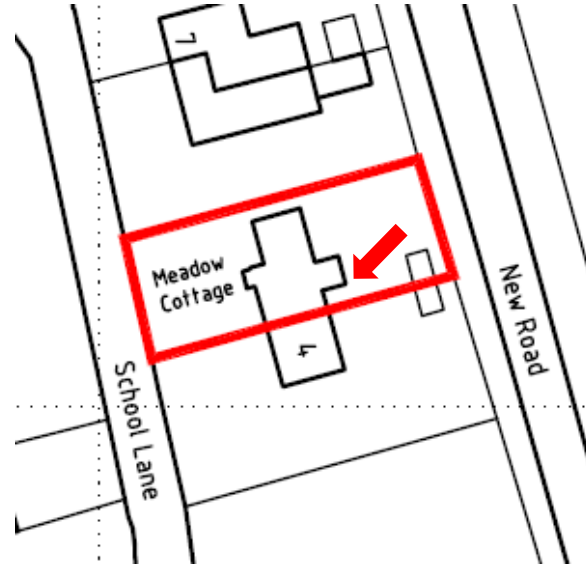
Proposed roof plan



[Previous](#)

[Next](#)

[Home](#)



[Previous](#)

[Next](#)

[Home](#)

This page is intentionally left blank

20/P/00774

**Old Orleans Restaurant
Bedford Road
Guildford
GU1 4SJ**

[Previous](#)

[Next](#)

[Home](#)

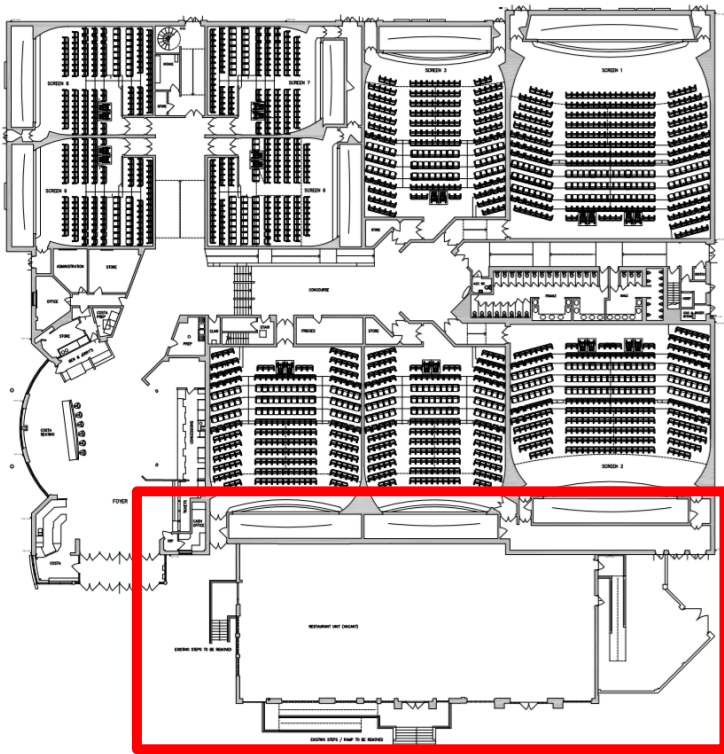


Location plan

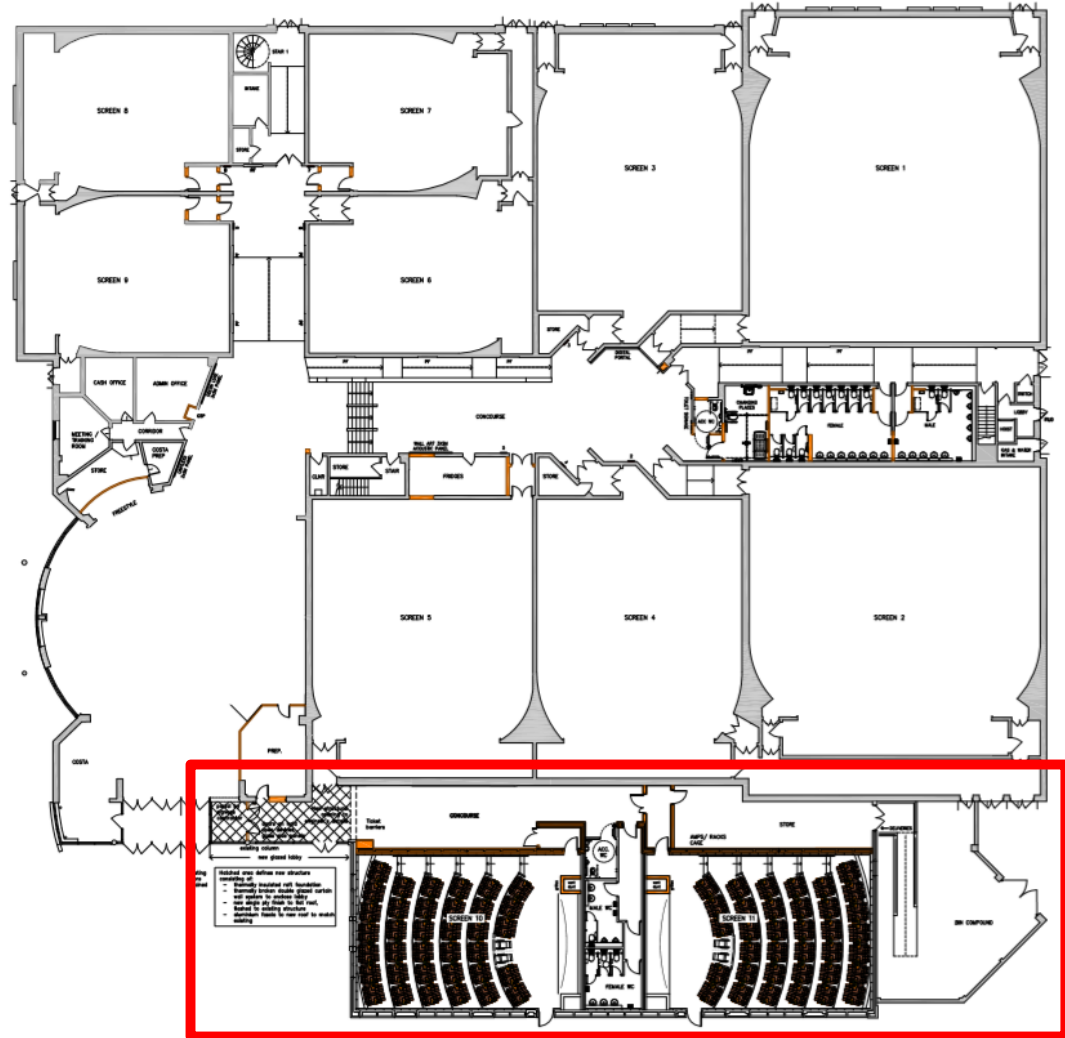
Previous

Next

Home



Existing ground floor



Proposed ground floor

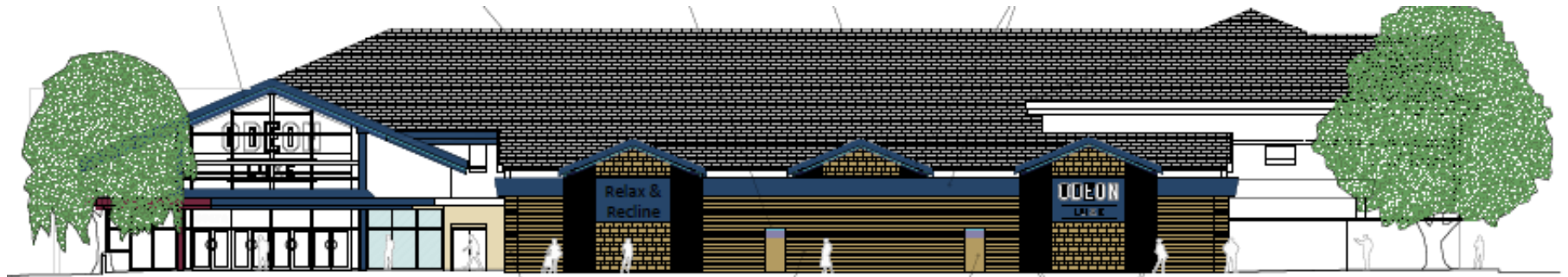
Previous

Next

Home



Existing south elevation

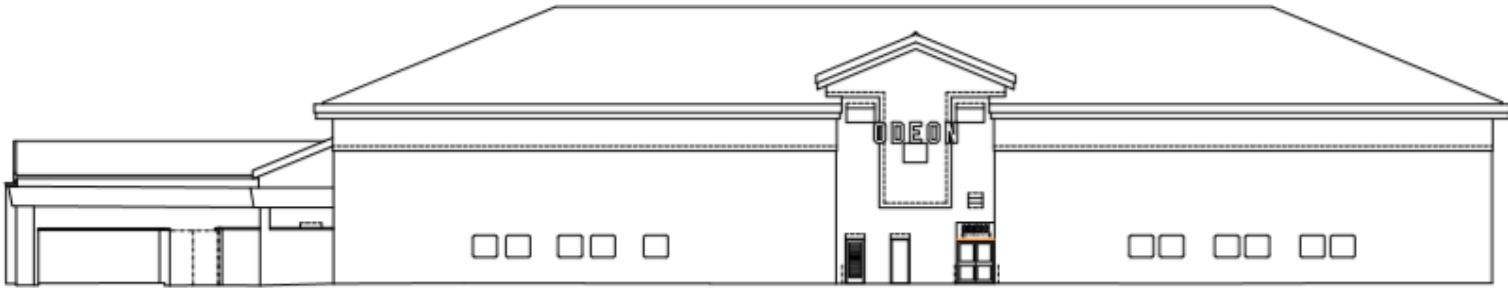


Proposed south elevation

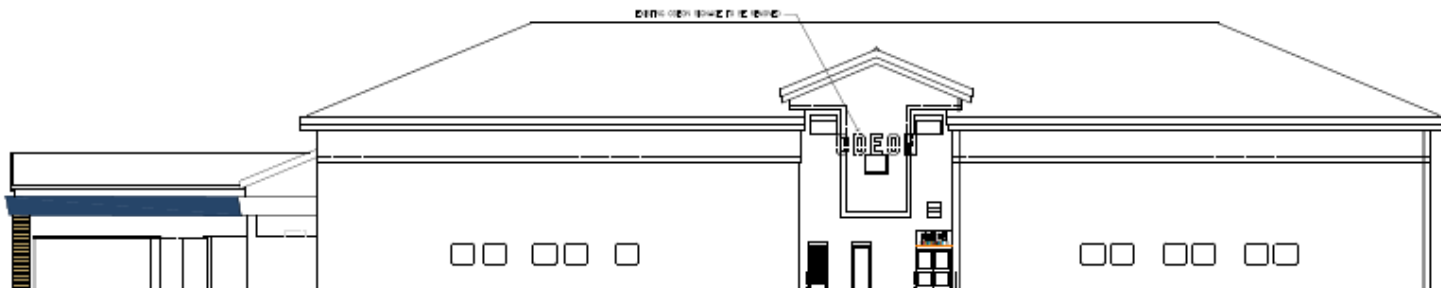
[Previous](#)

[Next](#)

[Home](#)



Existing east elevation



Proposed east elevation

[Previous](#)

[Next](#)

[Home](#)



Existing west elevation



Proposed west elevation

[Previous](#)

[Next](#)

[Home](#)



[Previous](#)

[Next](#)

[Home](#)



[Previous](#)

[Next](#)

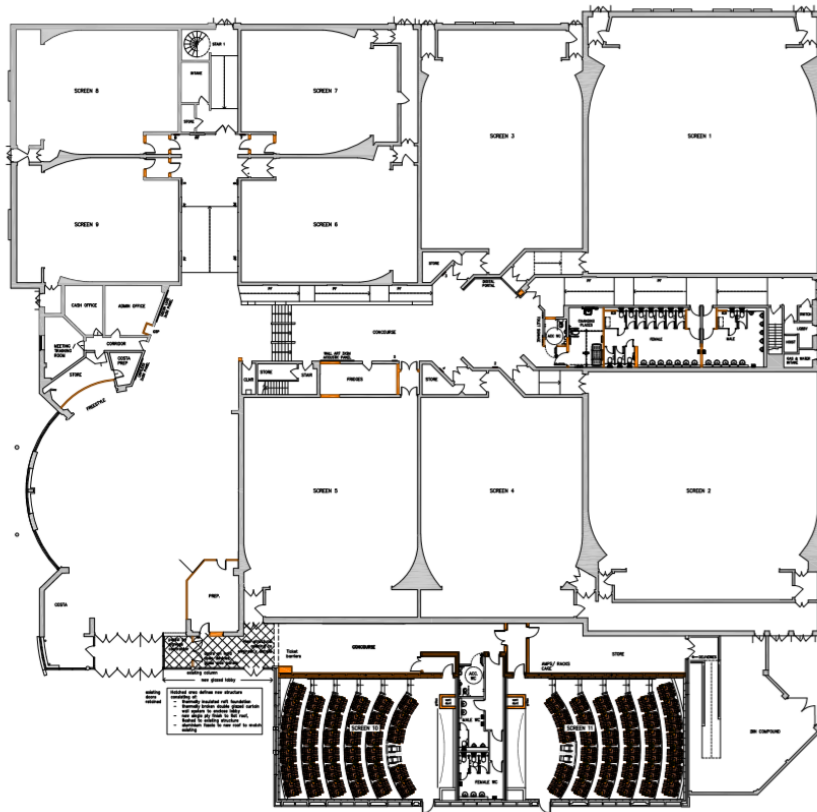
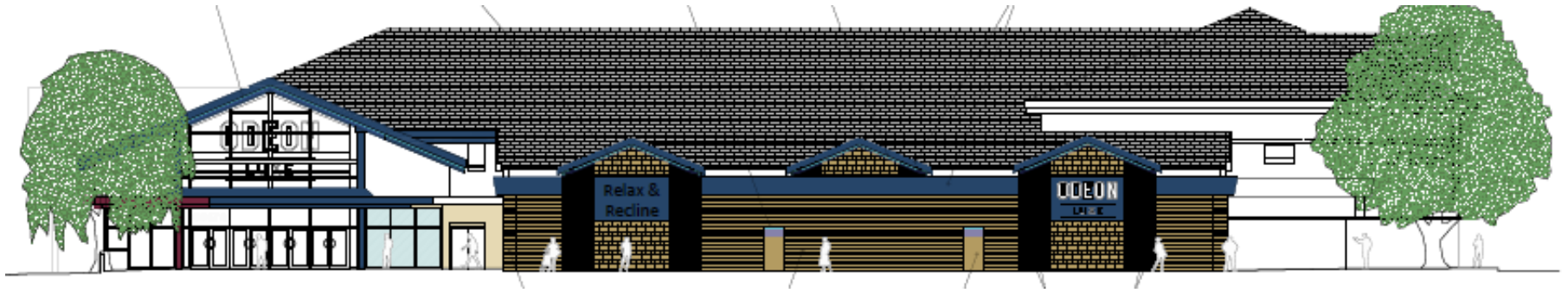
[Home](#)



[Previous](#)

[Next](#)

[Home](#)



[Previous](#)

[Next](#)

[Home](#)